

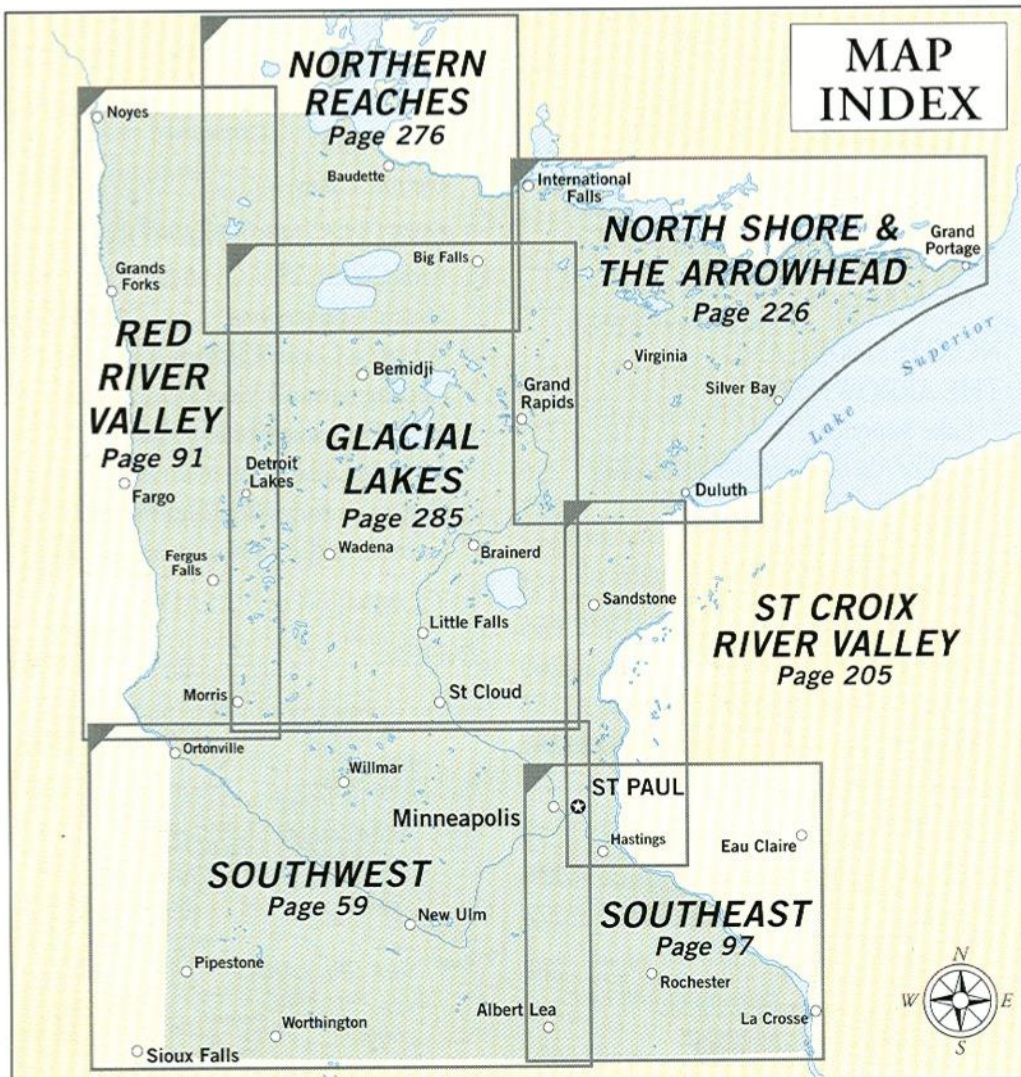
**ARROWHEAD REGION OVERVIEW  
HEADING TO DULUTH  
VIDEO FISHING ISSUES H-O-L (0-16)**

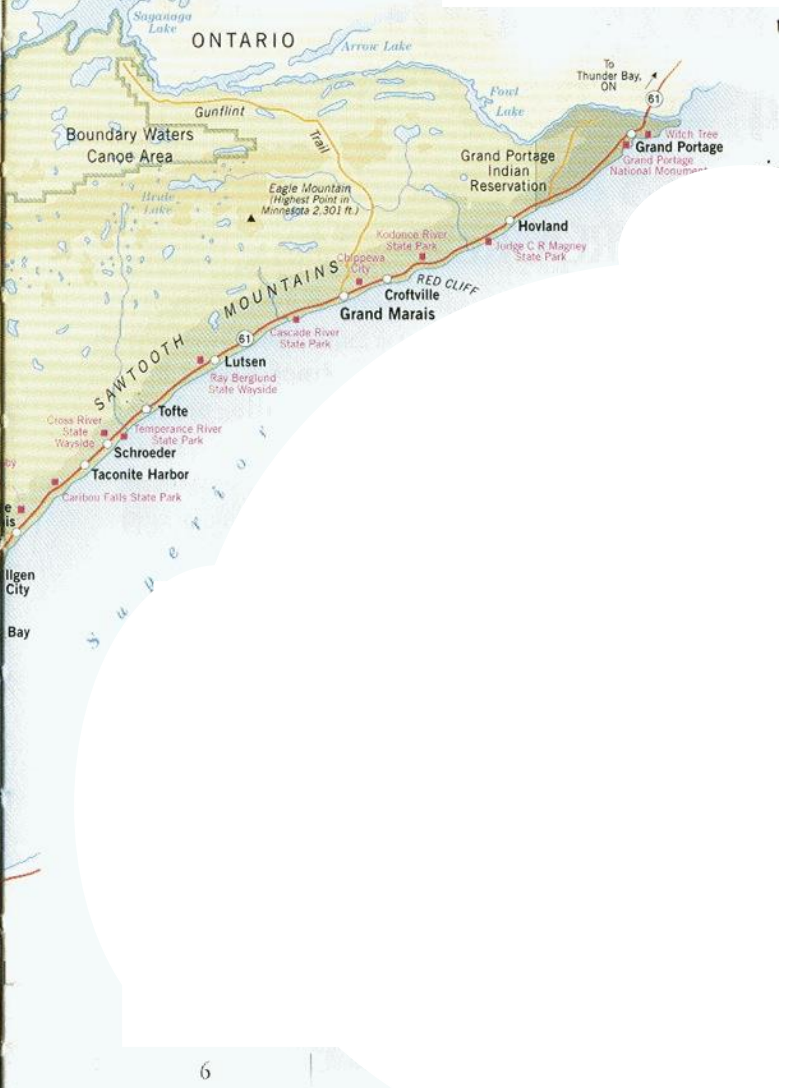
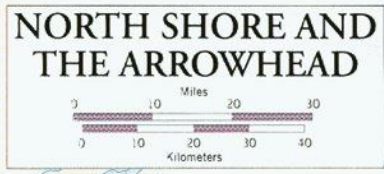
**DRIVE AROUND DULUTH  
UP THE NORTH SHORE  
FORESTRY**

**MINING ISSUES H-O-L (16-36)  
IRON RANGE – LAKE AIR PHOTOS  
TOWER MINE VIDEO CLIP**

**ACTIVITY**

# NORTH SHORE ARROWHEAD





## FACTS ABOUT MINNESOTA

*Land of 10,000 Lakes*

**STATE NAME:** Derived from two Dakota Indian words meaning "Clear Water"

**NICKNAME:** Gopher State, North Star State

**CAPITAL:** St. Paul

**ENTERED UNION:** May 11, 1858

**STATE BIRD:** Common loon

**STATE FLOWER:** Showy lady's-slipper

**STATE TREE:** Red pine

**STATE FISH:** Walleye

### GEOGRAPHY:

**Size:** 84,402 sq miles, 12th largest

**Highest point:** 2,301' Eagle Mountain

**Lowest point:** 602' Lake Superior

### CLIMATE:



**Hottest Day**  
114° F  
Moorhead  
July 6, 1936



**Coldest Day**  
-60° F  
at Tower  
Feb. 2, 1996



**Mean annual rainfall**  
19" northwest  
32" southeast



**Mean annual snowfall**  
70" northeast  
34" southwest



*Common loon*

### FIVE LARGEST CITIES:

Minneapolis: 368,383

St. Paul: 272,235

Bloomington: 86,335

Duluth: 85,493

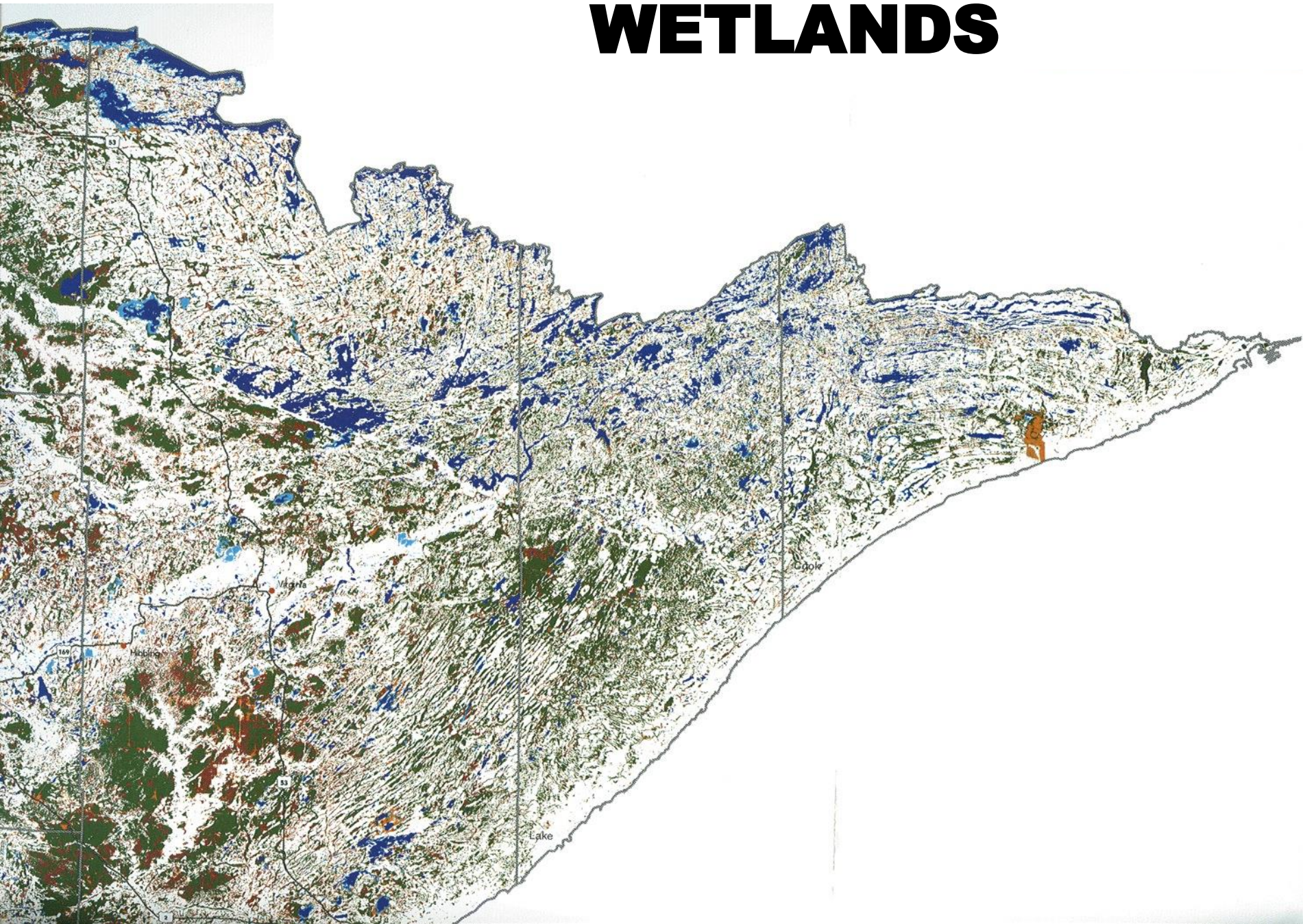
Rochester: 70,745

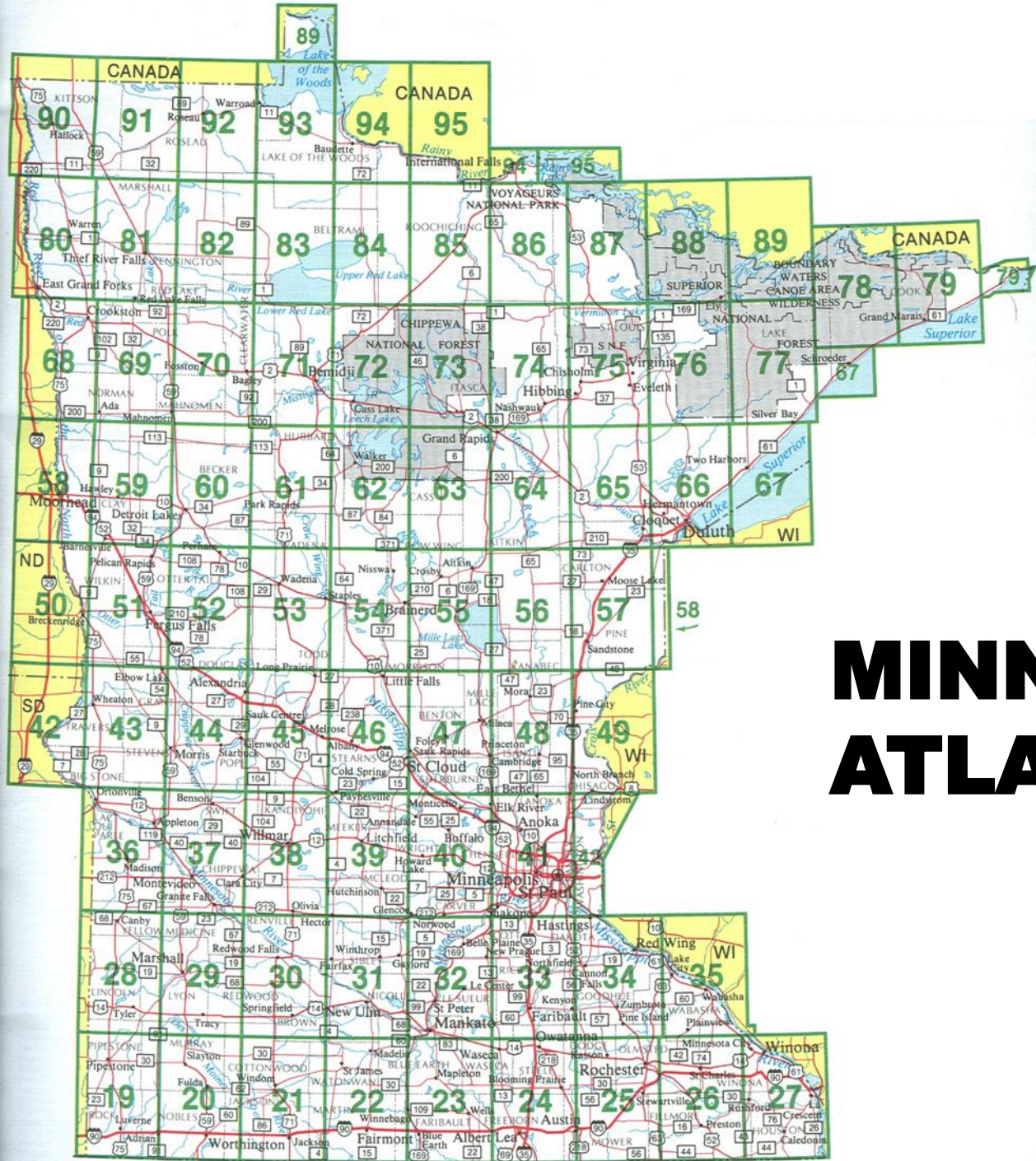
### FAMOUS MINNESOTIANS:

The Andrews Sisters, Warren Burger, Harry Blackmun, William O. Douglas, Bob Dylan, F. Scott Fitzgerald, Judy Garland, Jean Paul Getty, Hubert H. Humphrey, James "the Body" Ventury, Garrison Keillor, Prince, Jessica Lange, Sinclair Lewis, Charles A. Lindbergh, Jr., Walter Mondale, Jane Russell, Harrison Salisbury, Charles Schulz, Roy Wilkins



# WETLANDS





# MINNESOTA ATLAS PAGES



46°50'00"  
46.8333°

46°45'00"  
46.7500°

46°40'00"  
46.6667°

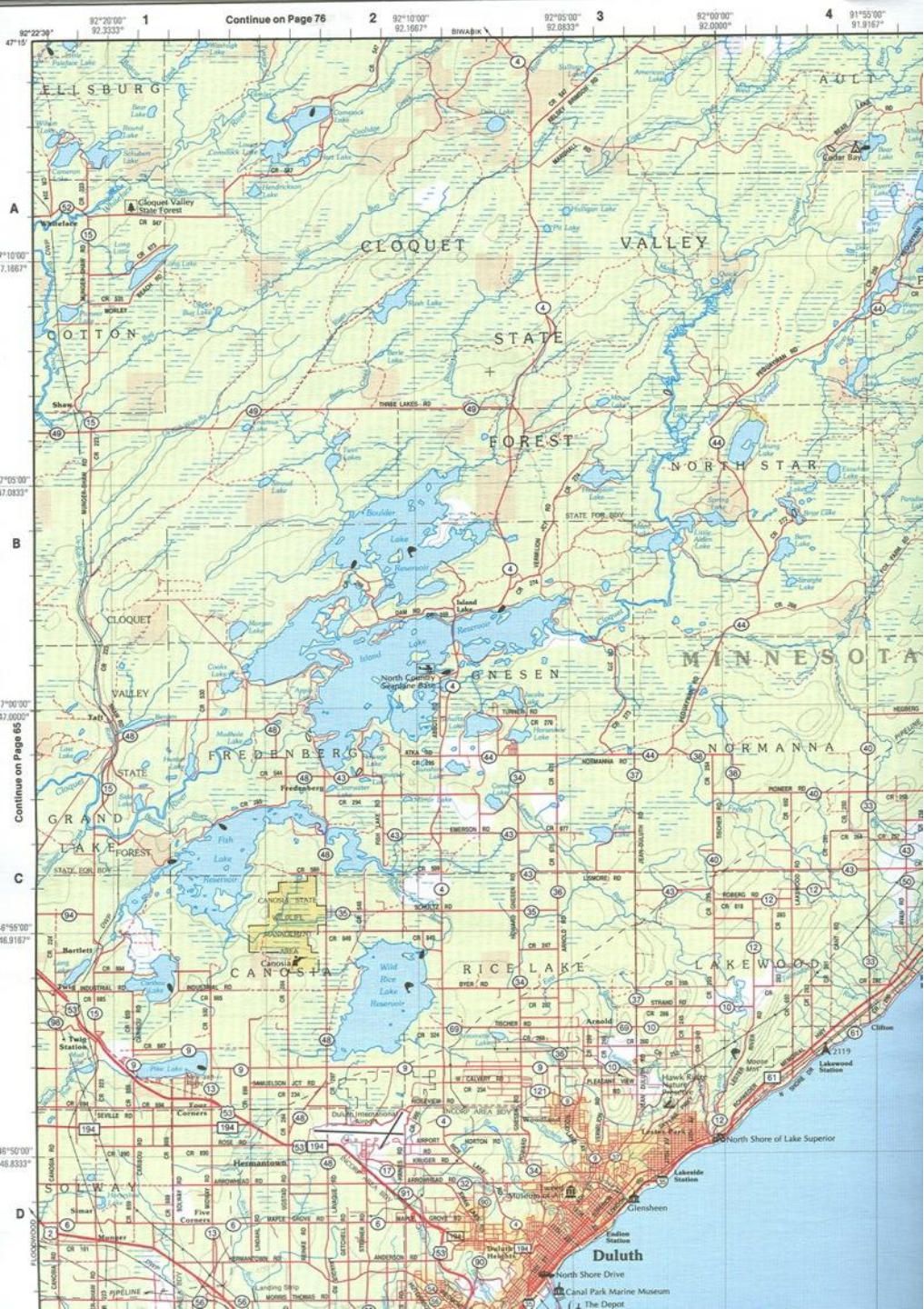
46°37'30"  
92°22'30"

92°15'00"  
92.2500°

Continue on inset Page 58

Continue in DeLorme's Wisconsin Atlas & Gazetteer





Continue on Page 76

Continue on Page 66

Duluth



6 91°40'00"  
91.6667°

7 91°35'00"  
91.5833°

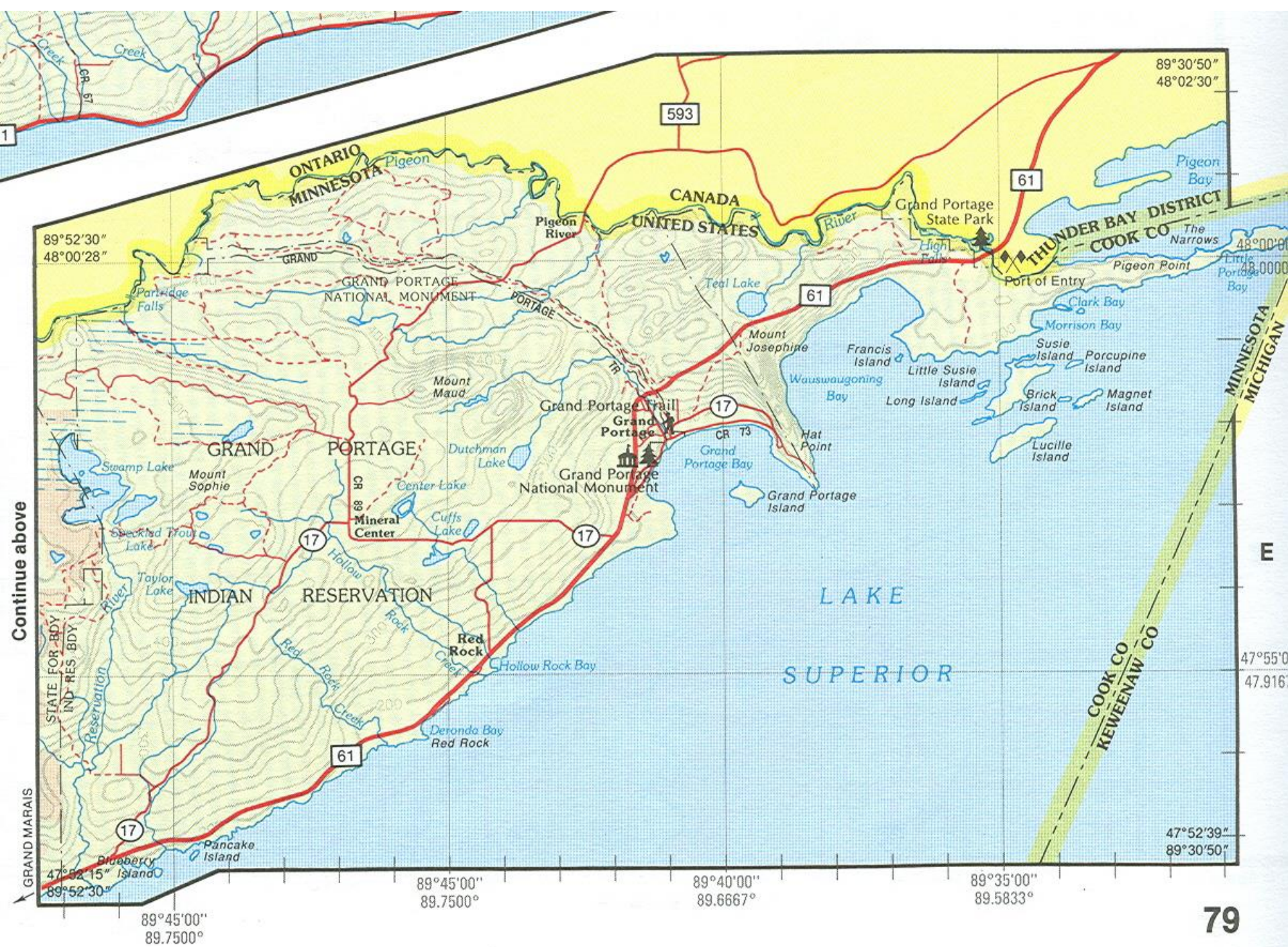
91°30'00"  
91.5000°

8 91°25'00"  
91.4167°

Continue on Page 77  
SILVER BAY



DEFINITE BOUNDARY



89°30'50"  
48°02'30"

89°52'30"  
48°00'28"

48°00'00"  
48°00'00"

47°55'00"  
47°51'00"

47°52'39"  
89°30'50"

89°45'00"  
89.7500°

89°45'00"  
89.7500°

89°40'00"  
89.6667°

89°35'00"  
89.5833°

Continue above

E

GRAND MARAIS

STATE FOR B.D.Y.  
IND. RES. B.D.Y.

COOK CO  
KEWEENAW CO

MINNESOTA  
MICHIGAN

ONTARIO  
MINNESOTA

CANADA  
UNITED STATES

THUNDER BAY DISTRICT  
COOK CO

GRAND PORTAGE

INDIAN RESERVATION

LAKE SUPERIOR

GRAND PORTAGE NATIONAL MONUMENT

Grand Portage National Monument

Grand Portage State Park

Port of Entry

Mount Sophie

Mount Maud

Mount Josephine

Red Rock

Mineral Center

Grand Portage

Hat Point

Brick Island

Susie Island

Morrison Bay

Clark Bay

Pigeon Bay

Pigeon Point

The Narrows

Little Portage Bay

Lucille Island

Magnet Island

Porcupine Island

Long Island

Little Susie Island

Wauswaugoning Bay

Francis Island

Teal Lake

Dutchman Lake

Center Lake

Cuffs Lake

Swamp Lake

Speckled Trout Lake

Taylor Lake

Resurrection River

Hollow Rock

Reed Rock

Reed Creek

Deronda Bay

Red Rock

Pancake Island

Blueberry Island

CR 89

CR 73

CR 61

CR 57

CR 17

CR 17

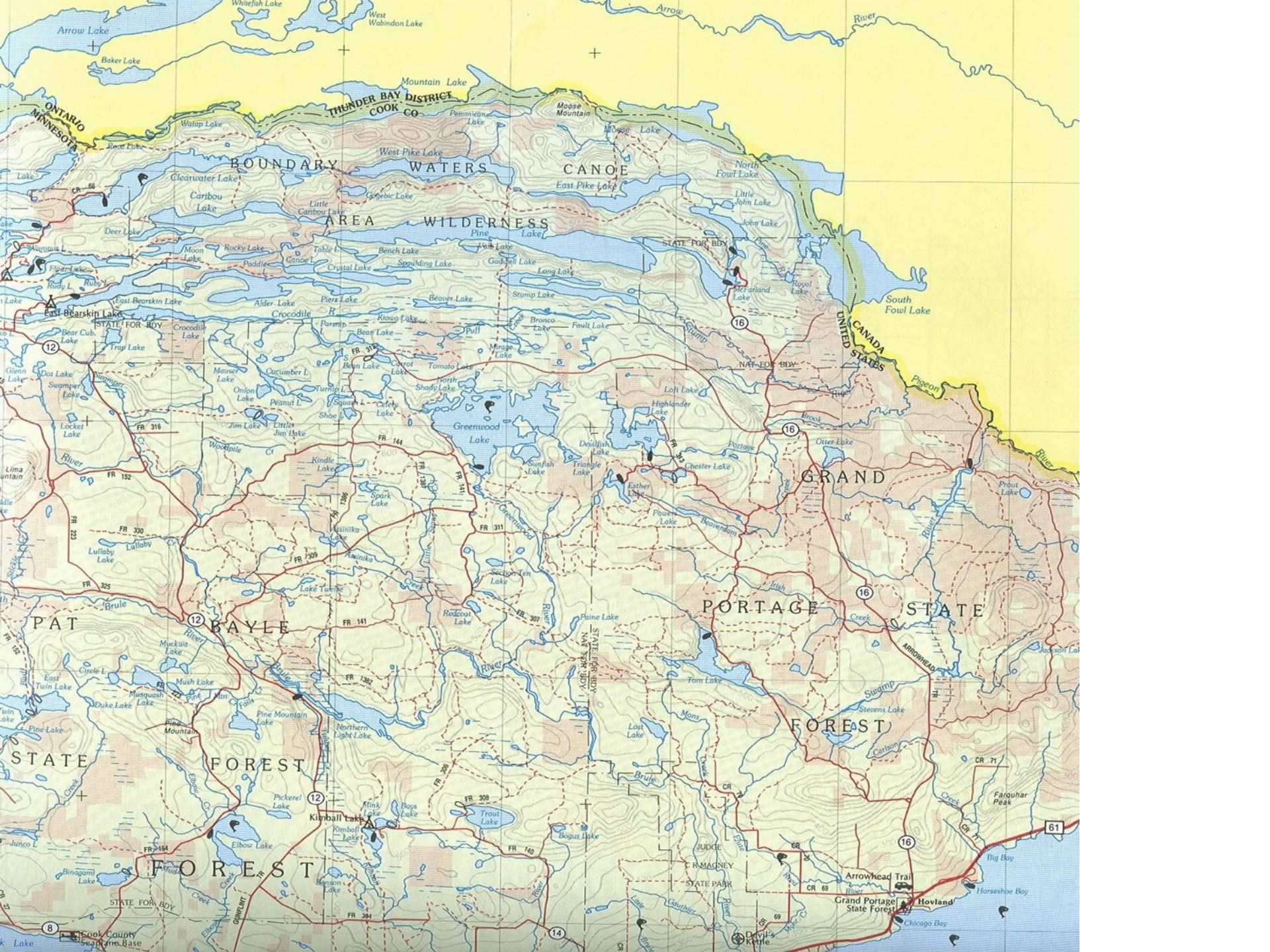
CR 17

CR 17

CR 17

CR 17

CR 17



# GOING UP NORTH





SOUTH  
35

35



KNOT FREE  
II









REST  
AREA  
➔



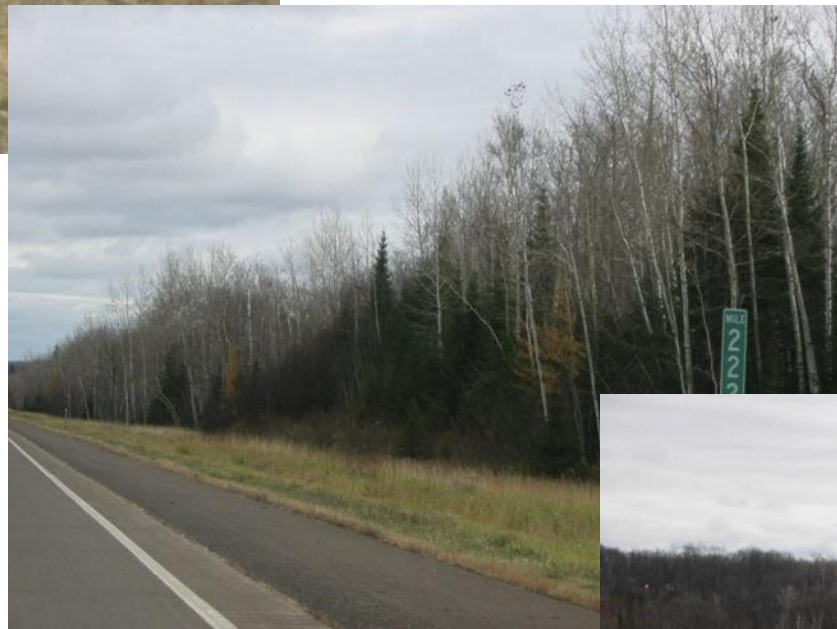
# Sight Blight





**Almost to Duluth**





# Field Succession Lake Classification

**Lake Superior Fisheries  
H-O-L #4 (0-16)**

# ARRIVING AT DULUTH

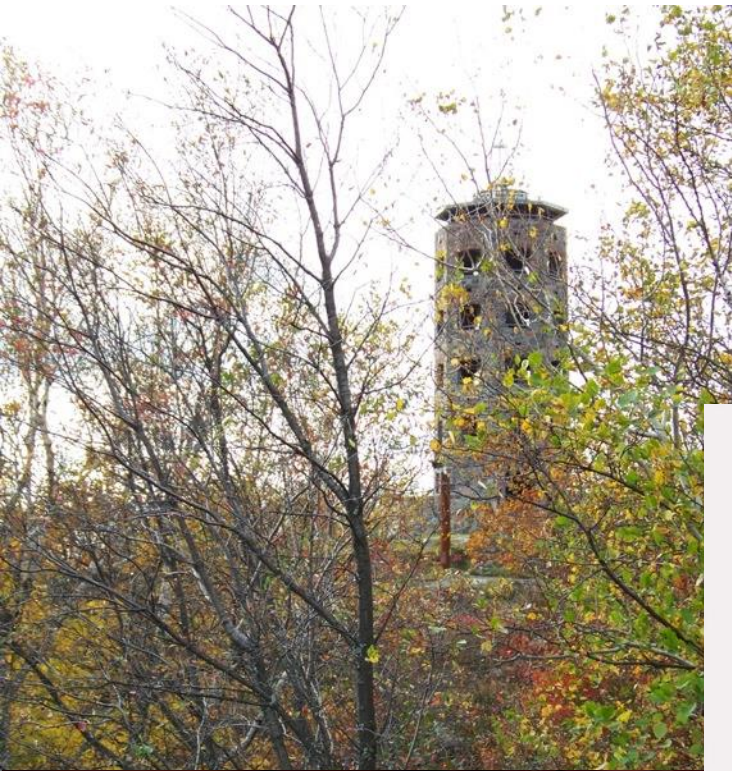




# SKYLINE DRIVE



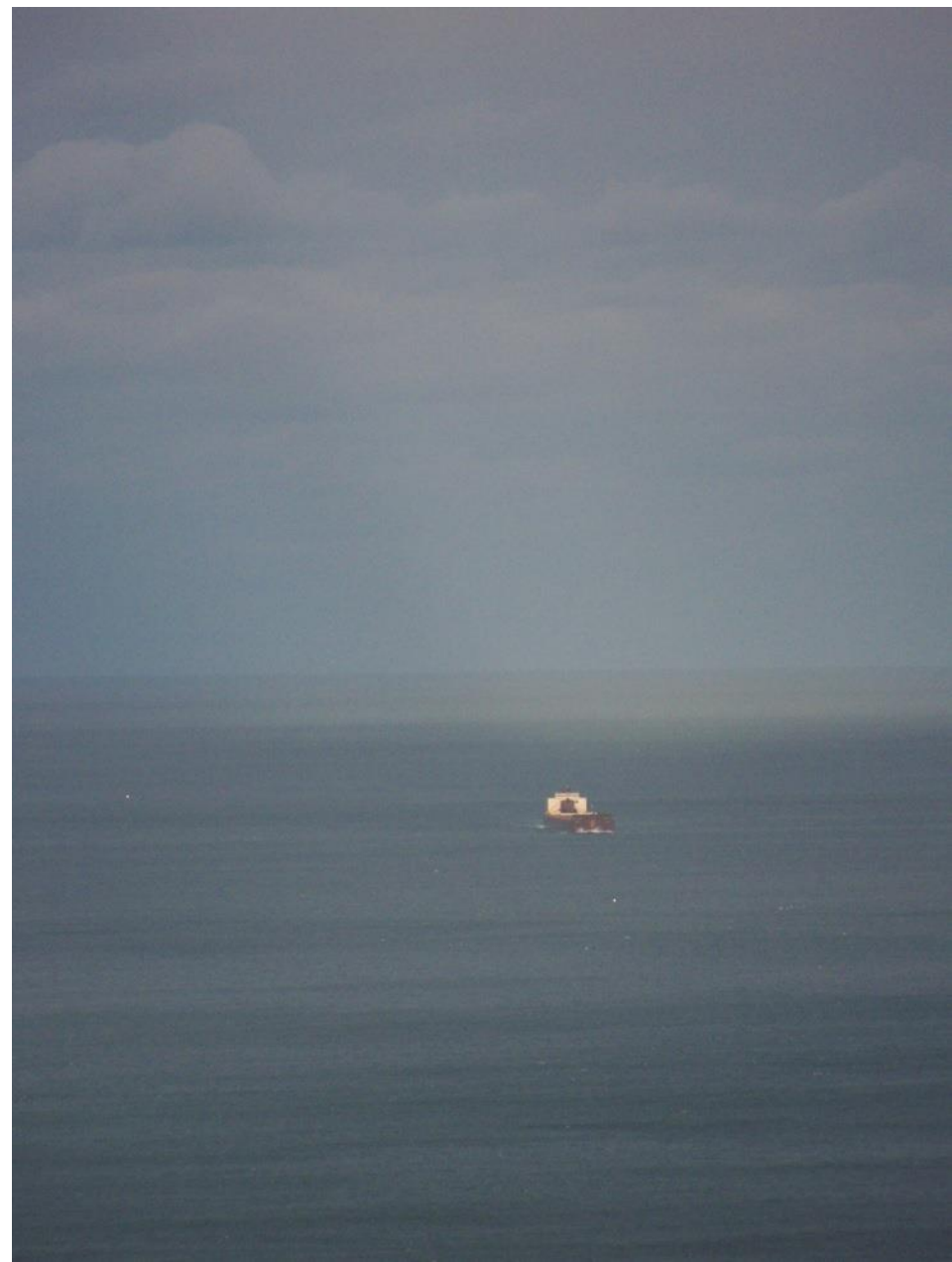






**Panoramic view**







## **International Port**









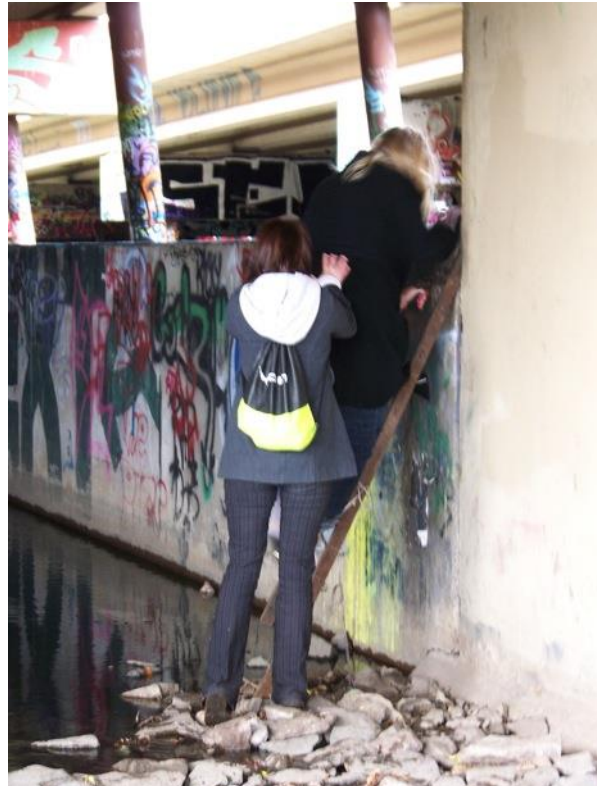
# Downtown Duluth

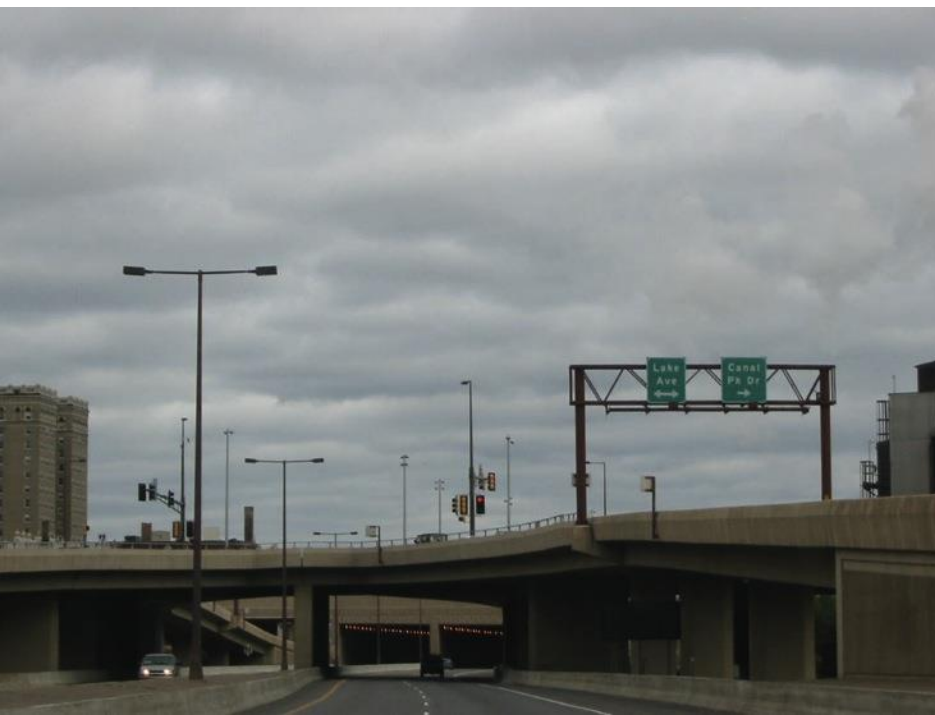


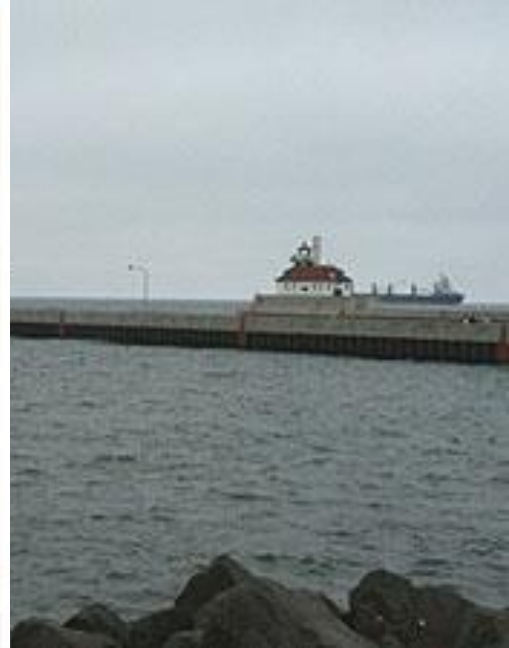




# Graffiti Graveyard







# DULUTH HARBOR









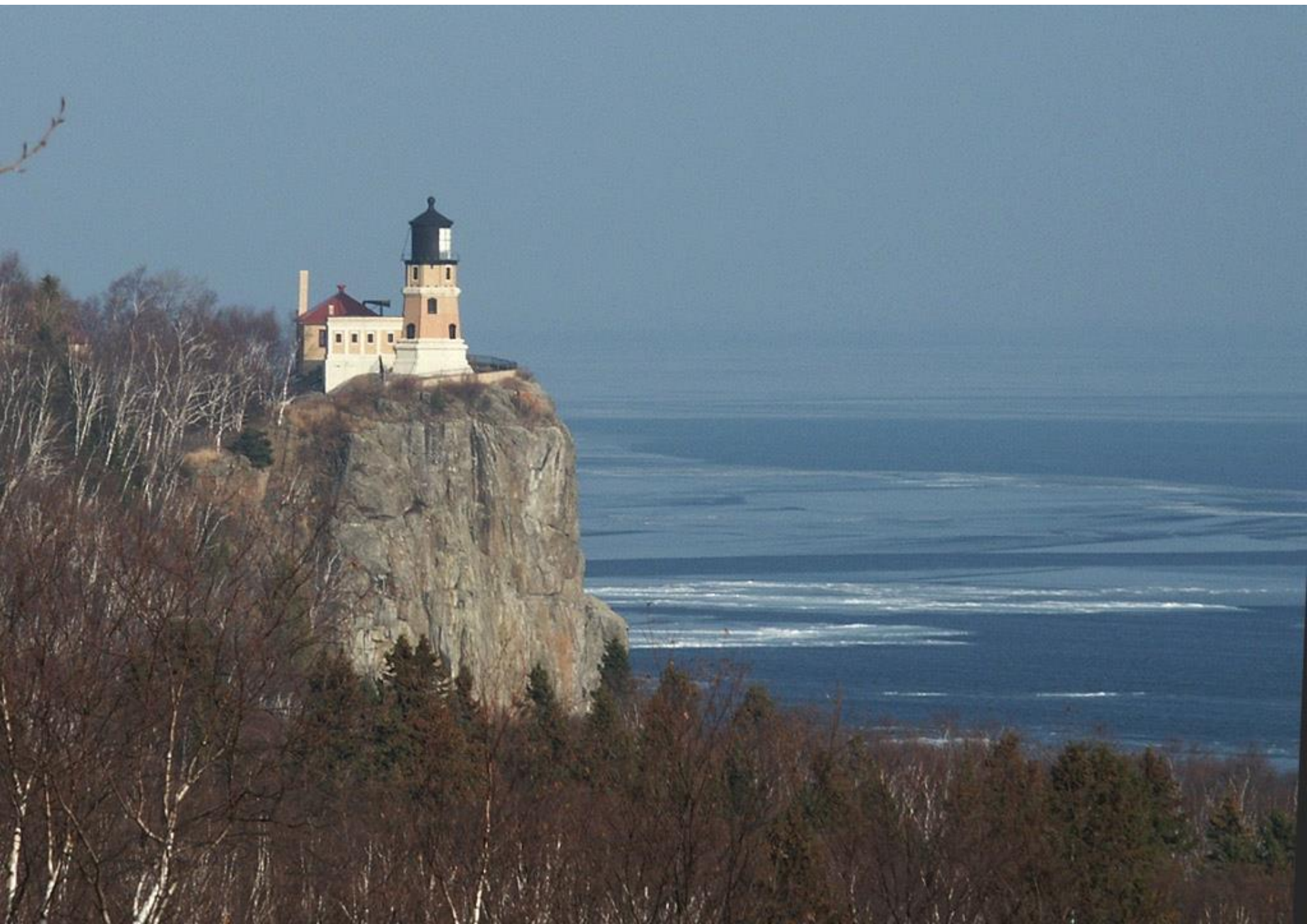


## **Duluth Weather**

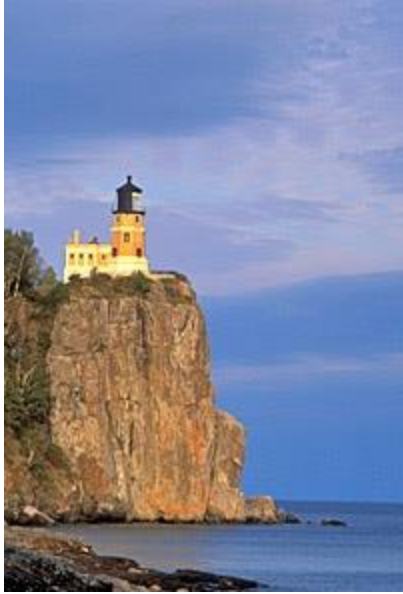
# ALONG THE NORTH SHORE











# State Park – Trail Information

## MN DNR

### CASCADE RIVER STATE PARK

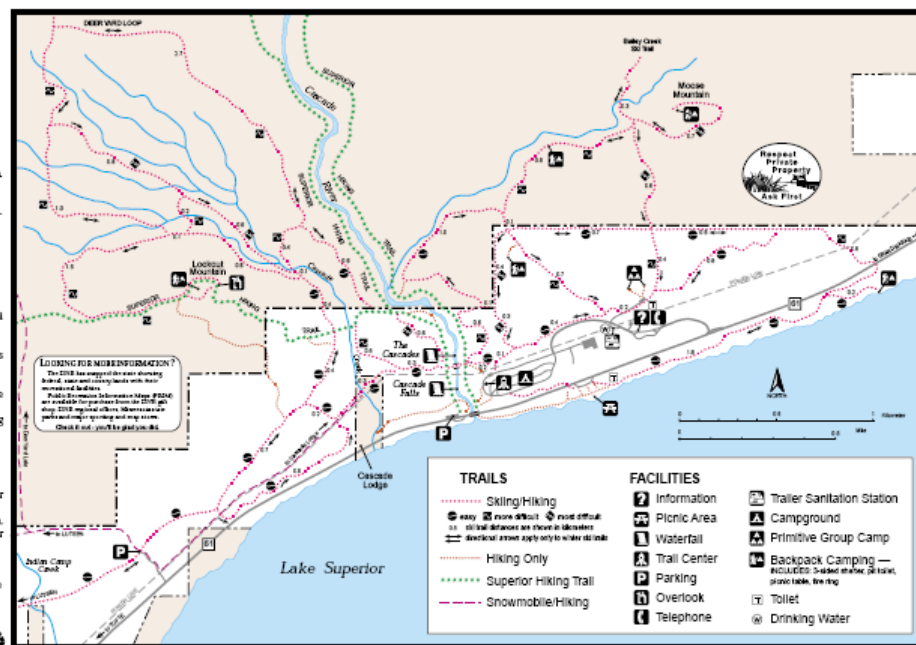
#### FACILITIES AND FEATURES

- 40 semi-modern campsites with showers, flush toilets, and trailer sanitation station.
- A year-round trail center building with picnic tables, a wood stove, electrical outlets and a pop machine.
- Group camp with two campsites
- Five backpack campsites
- Access to Superior Hiking Trail
- 18 miles of hiking trails
- 17 miles of cross country ski trails
- Two miles of snowmobile trail with access to area trails and the North Shore State Trail
- Seven picnic sites along Lake Superior
- Lake and trout stream fishing

#### VISITOR FAVORITES

- Waterfalls of the Cascade River (0.5 mile/0.8 kilometer loop hike)
- Hiking to Lookout Mountain, 600 feet above Lake Superior (3.5 miles/5.6 kilometers, round trip)
- One and a half miles of rugged Lake Superior shore
- Hiking along the Cascade River

© 7/2000 by State of Minnesota, Department of Natural Resources



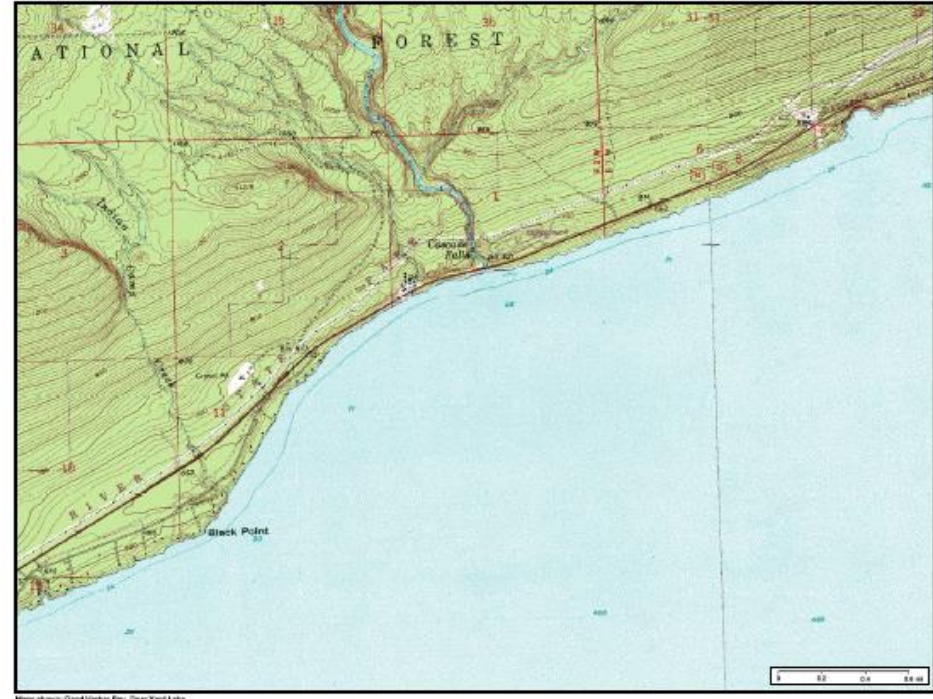
Minnesota DNR - ToMO Service

USGS 1:100,000 Quadrangles



Minnesota DNR - ToMO Service

USGS 1:24,000 Quadrangles





## **Duluth to Two Harbors**









SILVER CREEK CLIFF





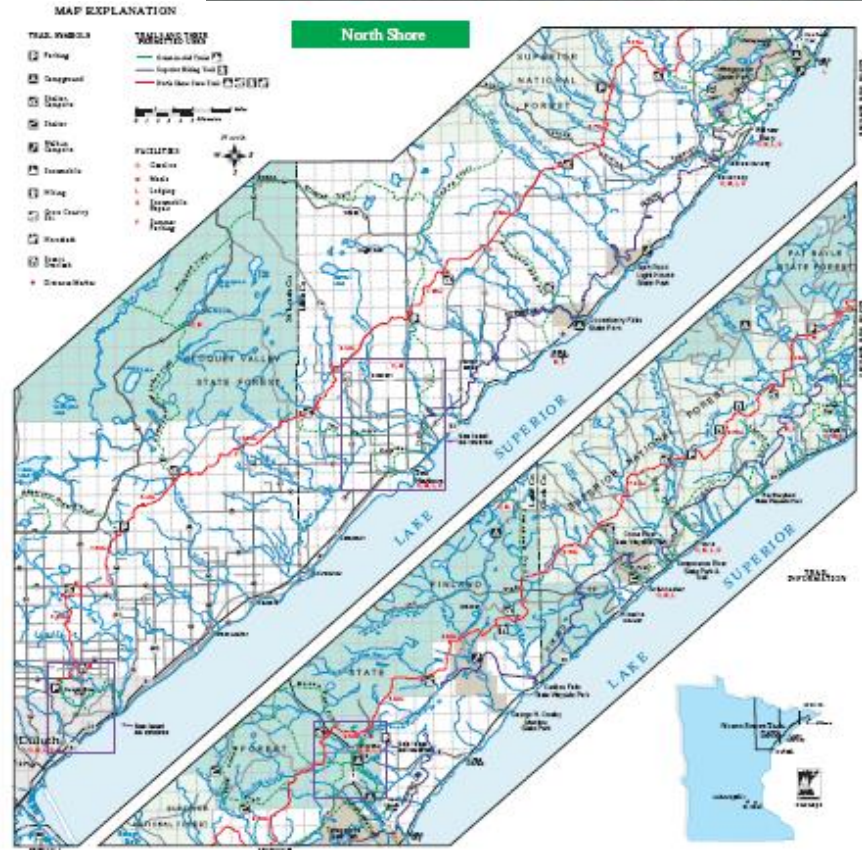


# AT THE CABIN

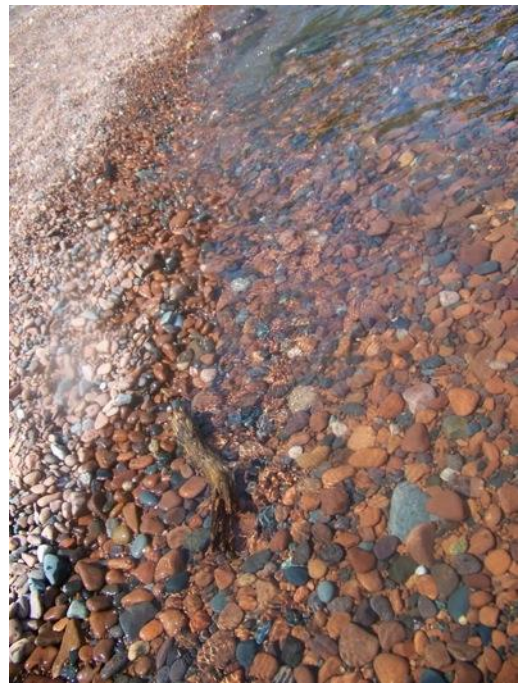


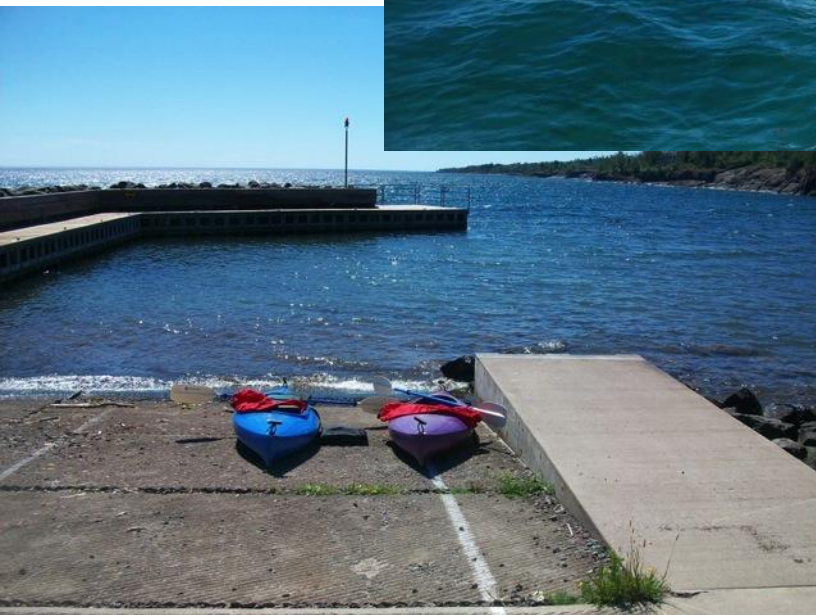


# ALONG THE SHORE

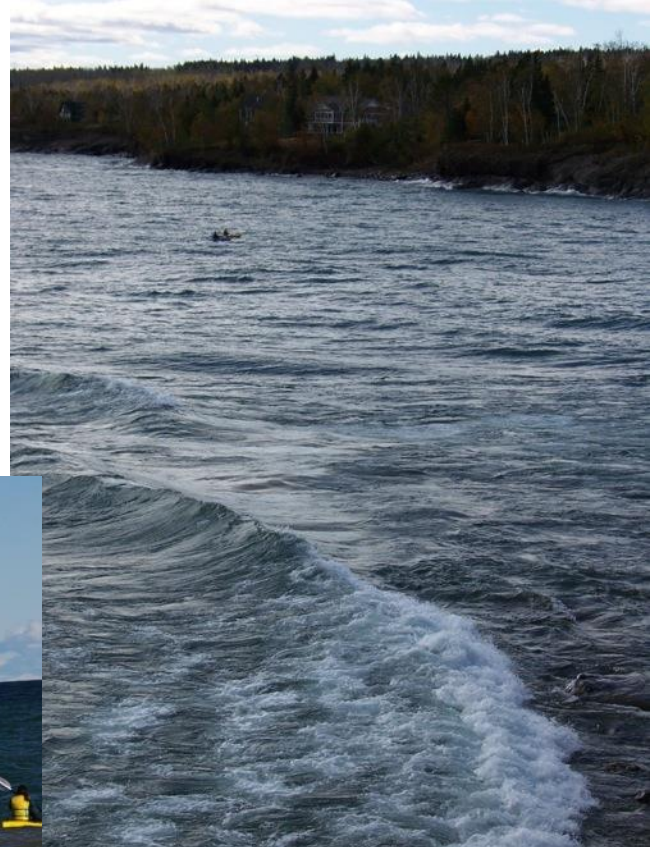
























# IN THE WOODS





# GOOSEBERRY FALLS HIKING TRAILS





# GOOSEBERRY FALLS HIKING TRAILS









**Waterfalls**

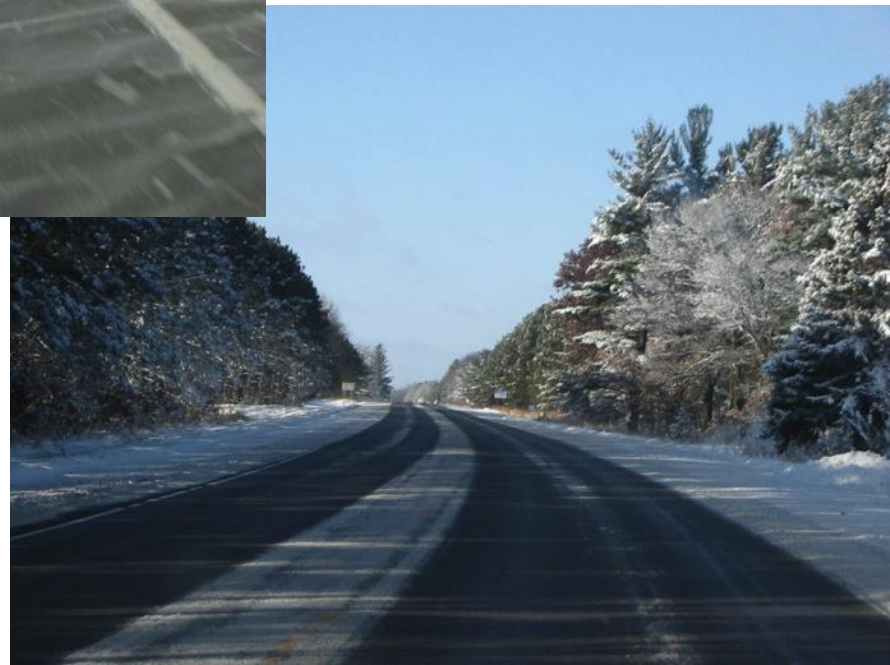
**Wetlands**



# UP NORTH IN THE WINTER



















# ST LOUIS RIVER





# RIVER CLASSIFICATION

- I
- II
- III
- IV







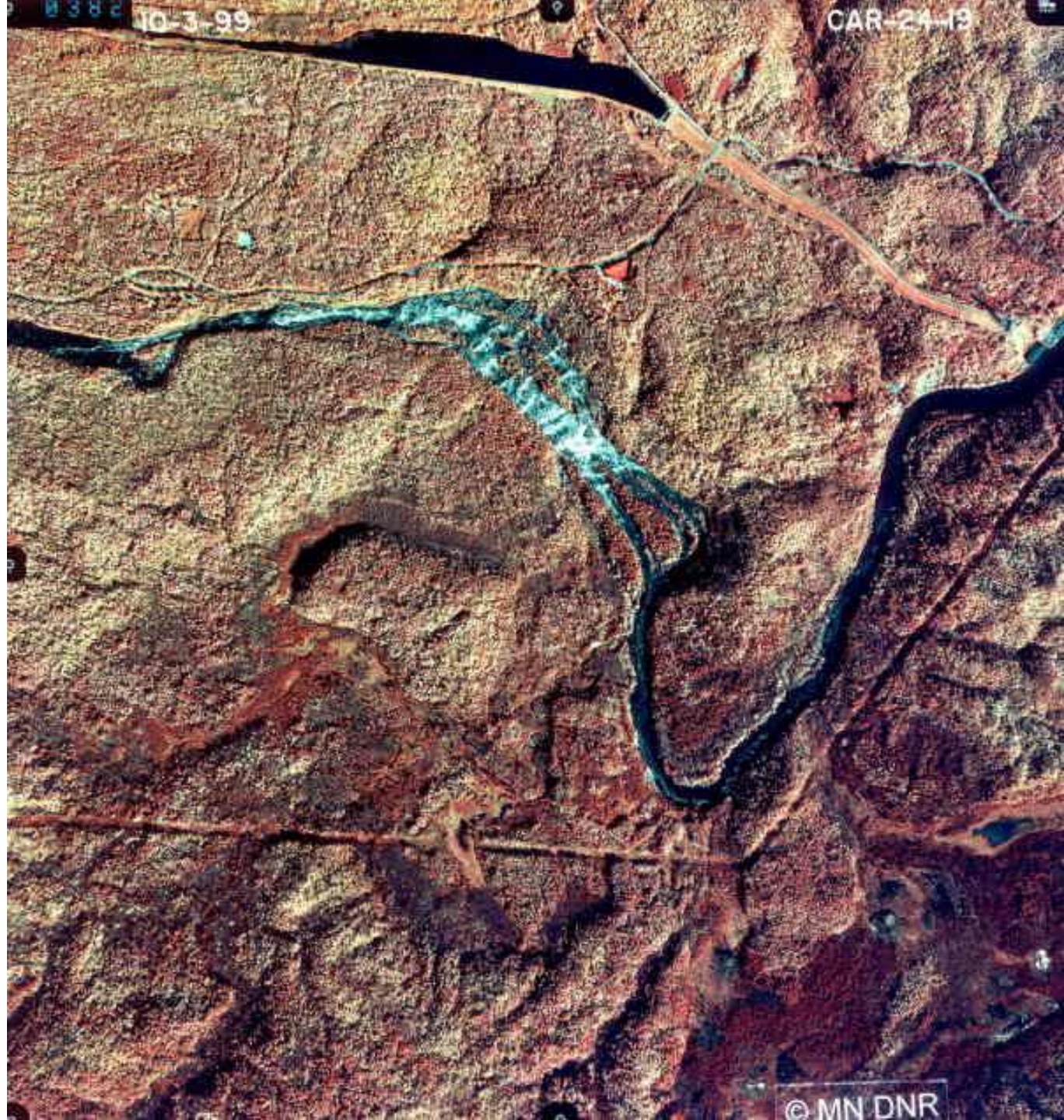


## Reinventing Forestry





**66 E1**

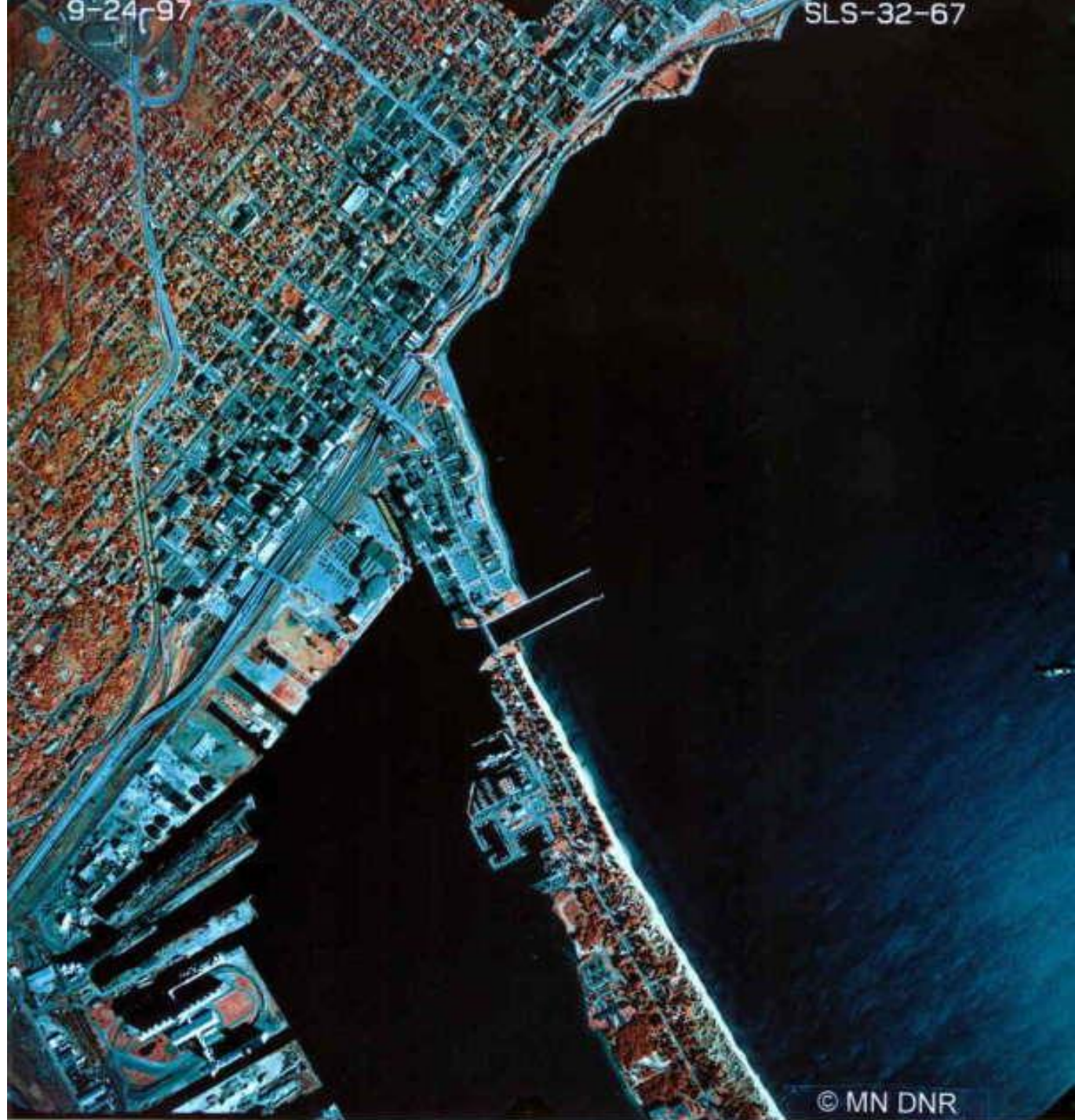


10-3-99

CAR-24-13

© MN DNR

**66 D2**



9-24-97

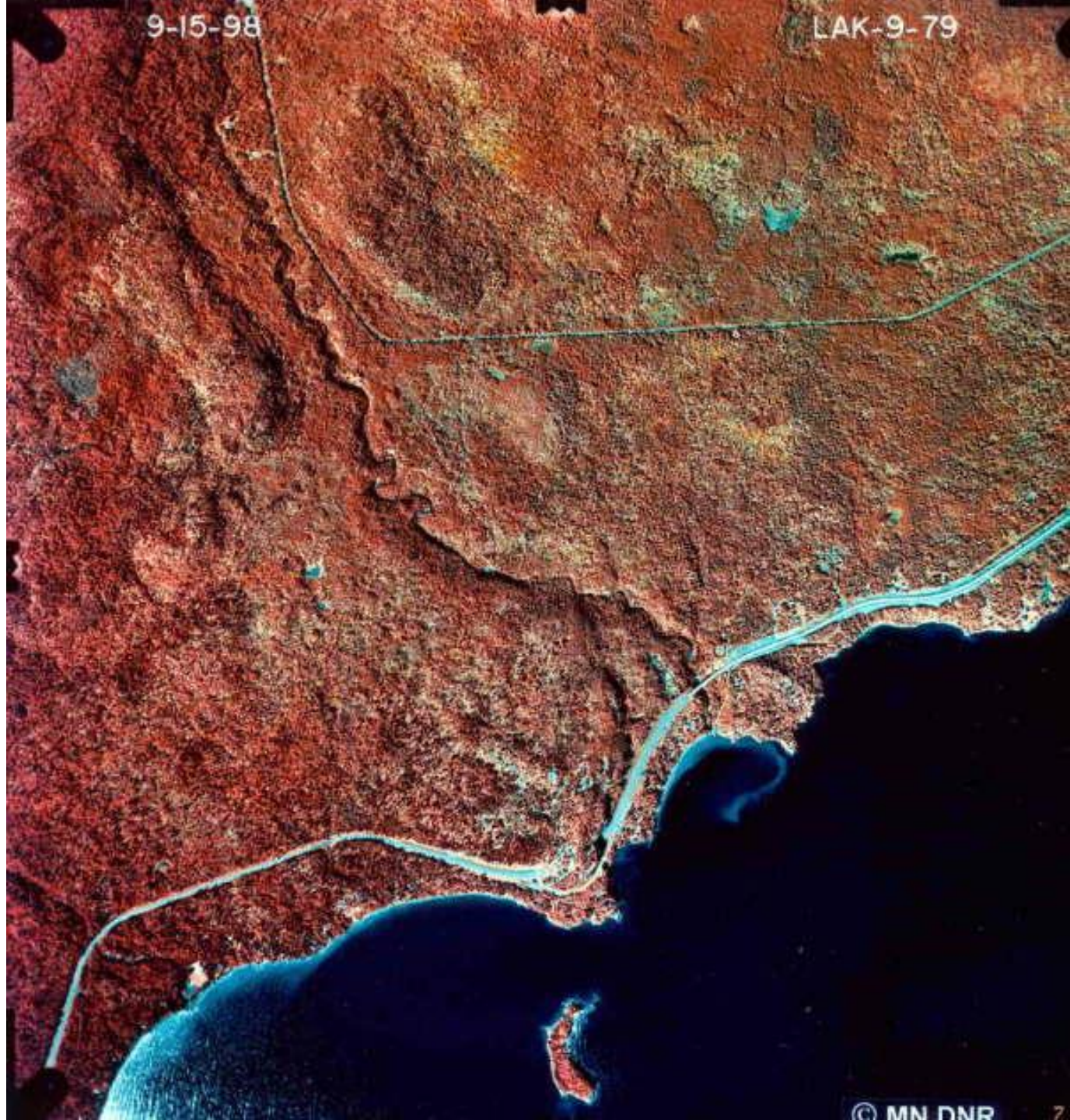
SLS-32-67

© MN DNR

9-15-98

LAK-9-79

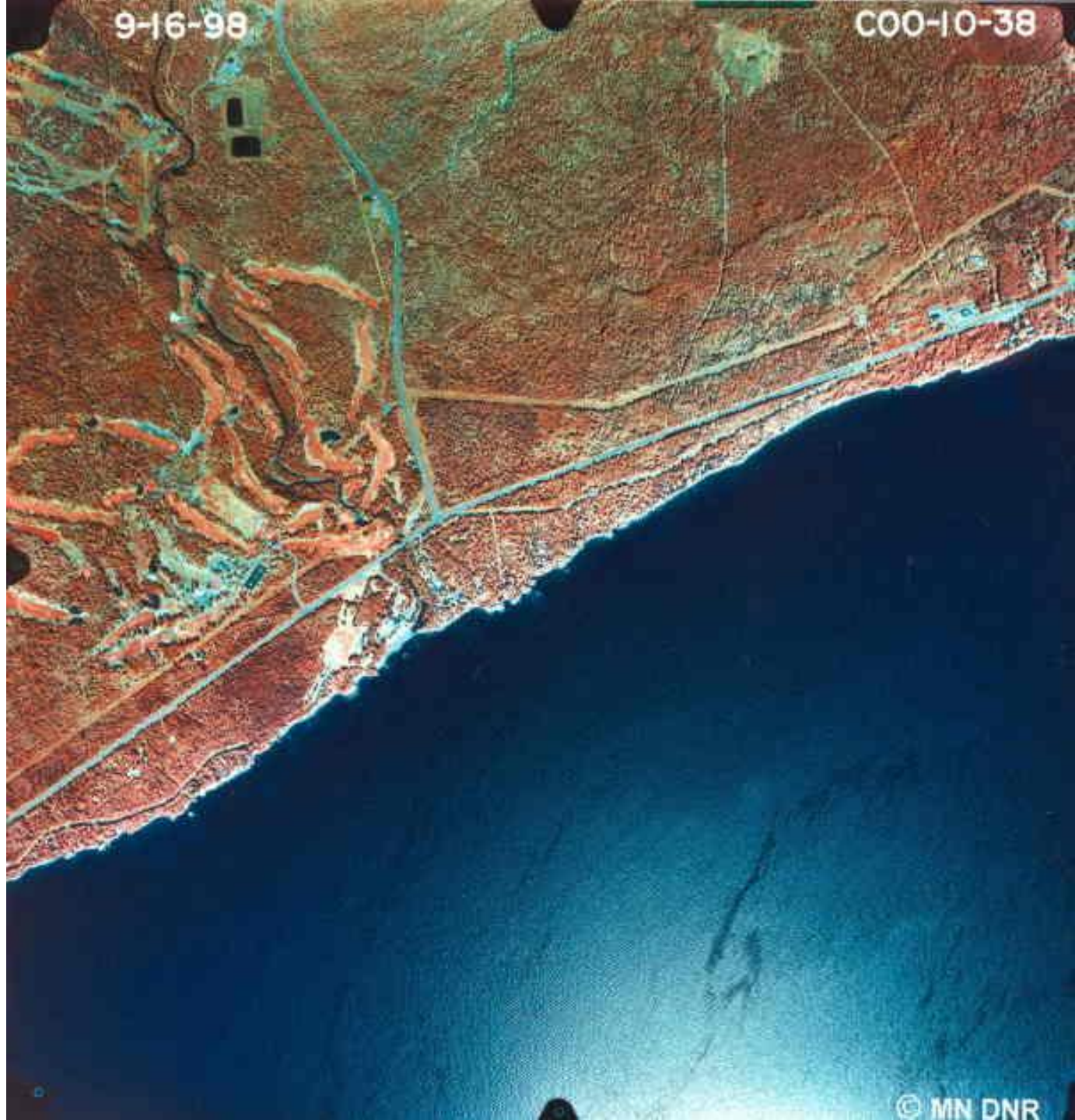
**67 B7**



9-16-98

C00-10-38

**78 E4**

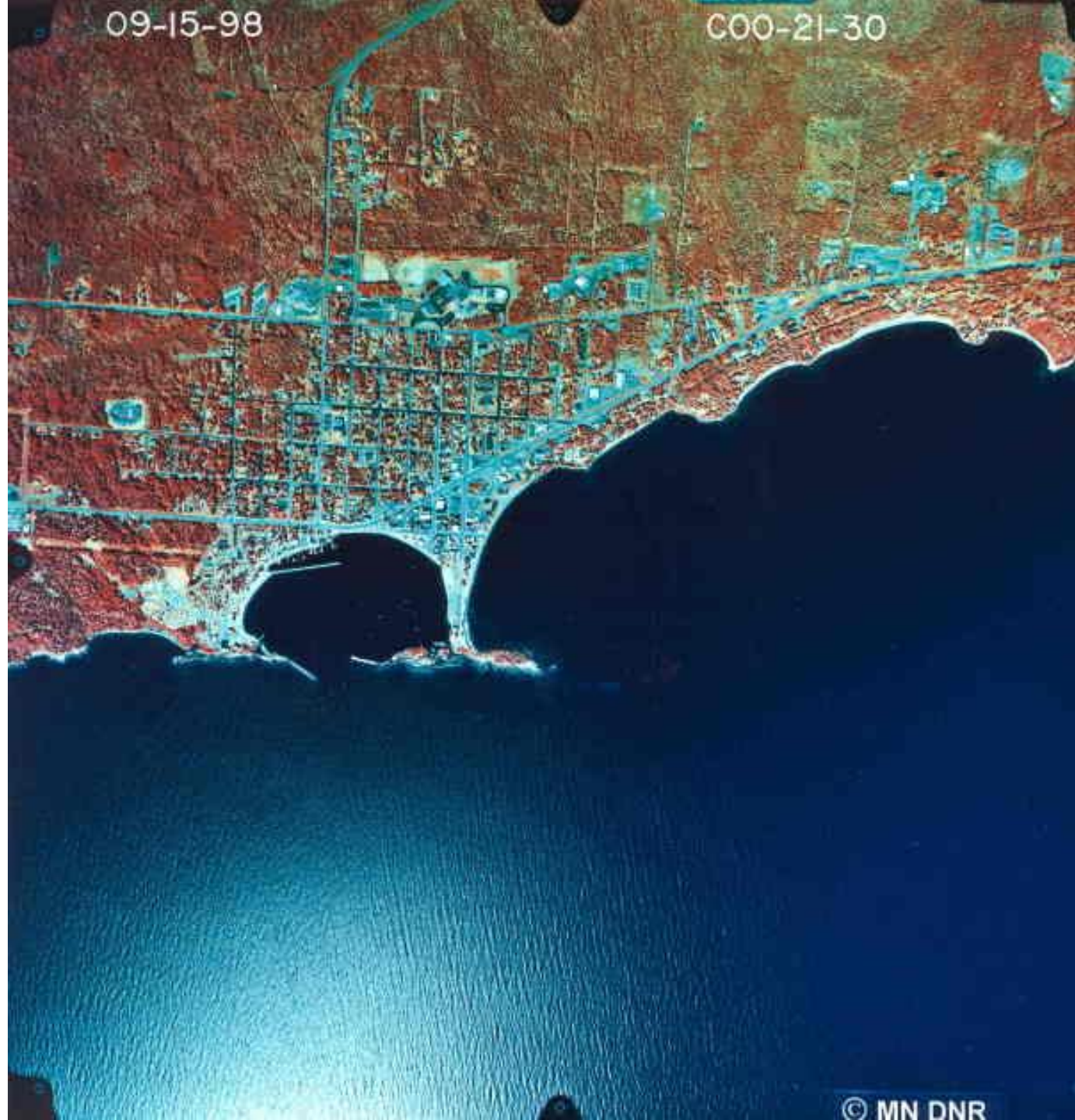


© MN DNR

09-15-98

C00-21-30

**79 D6**



**78 D5**



9-28-99

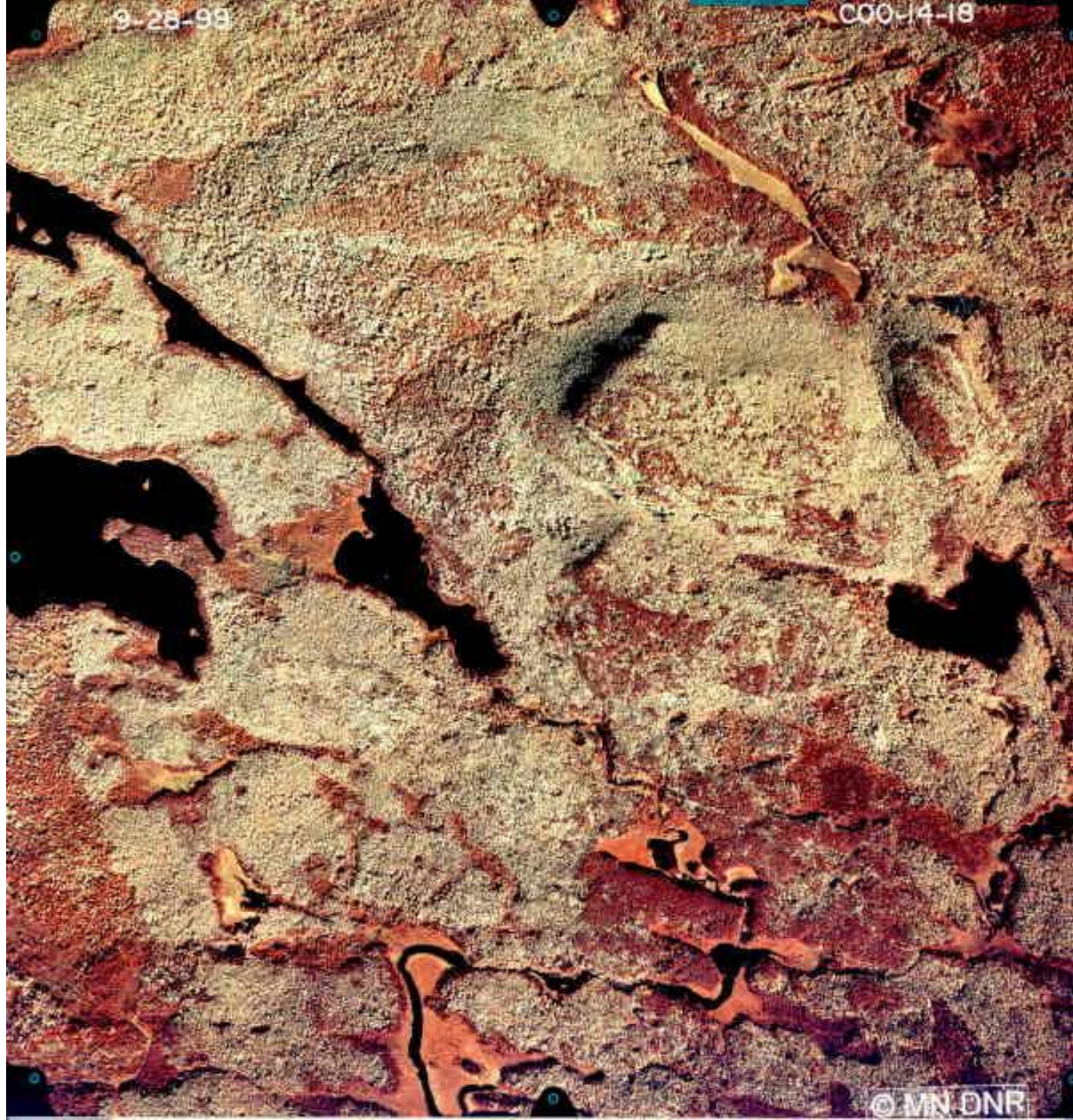
C00-16-24



9-28-99

C00-14-18

**78 C5**



© MN DNR

9-24-99

C00-45-3

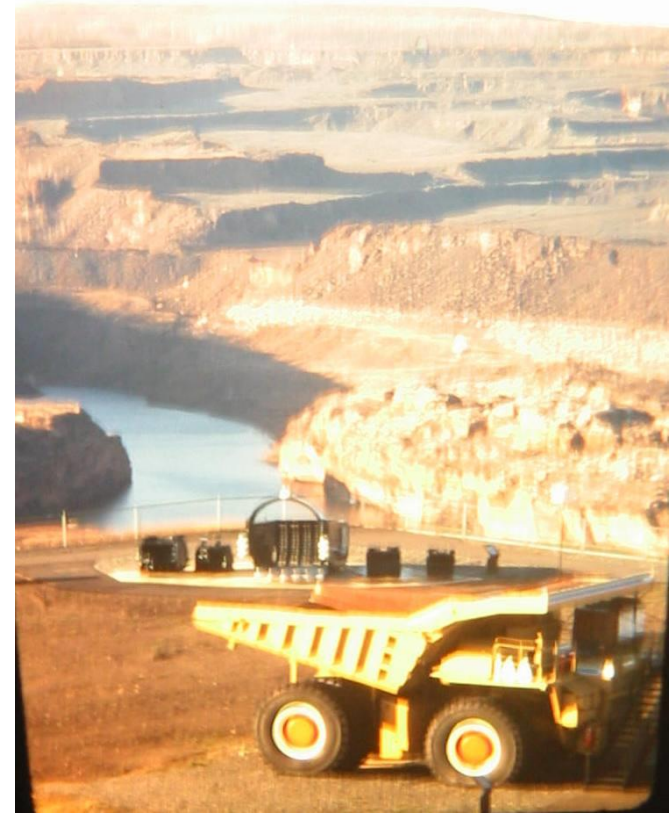
**79 D10**



# **H-O-L #4 Taconite (16-36)**

# MINES





**Hibbing Area**



**Aqua-culture**

**Taconite**



9-23-97

SLS-6-16

**75 D5**

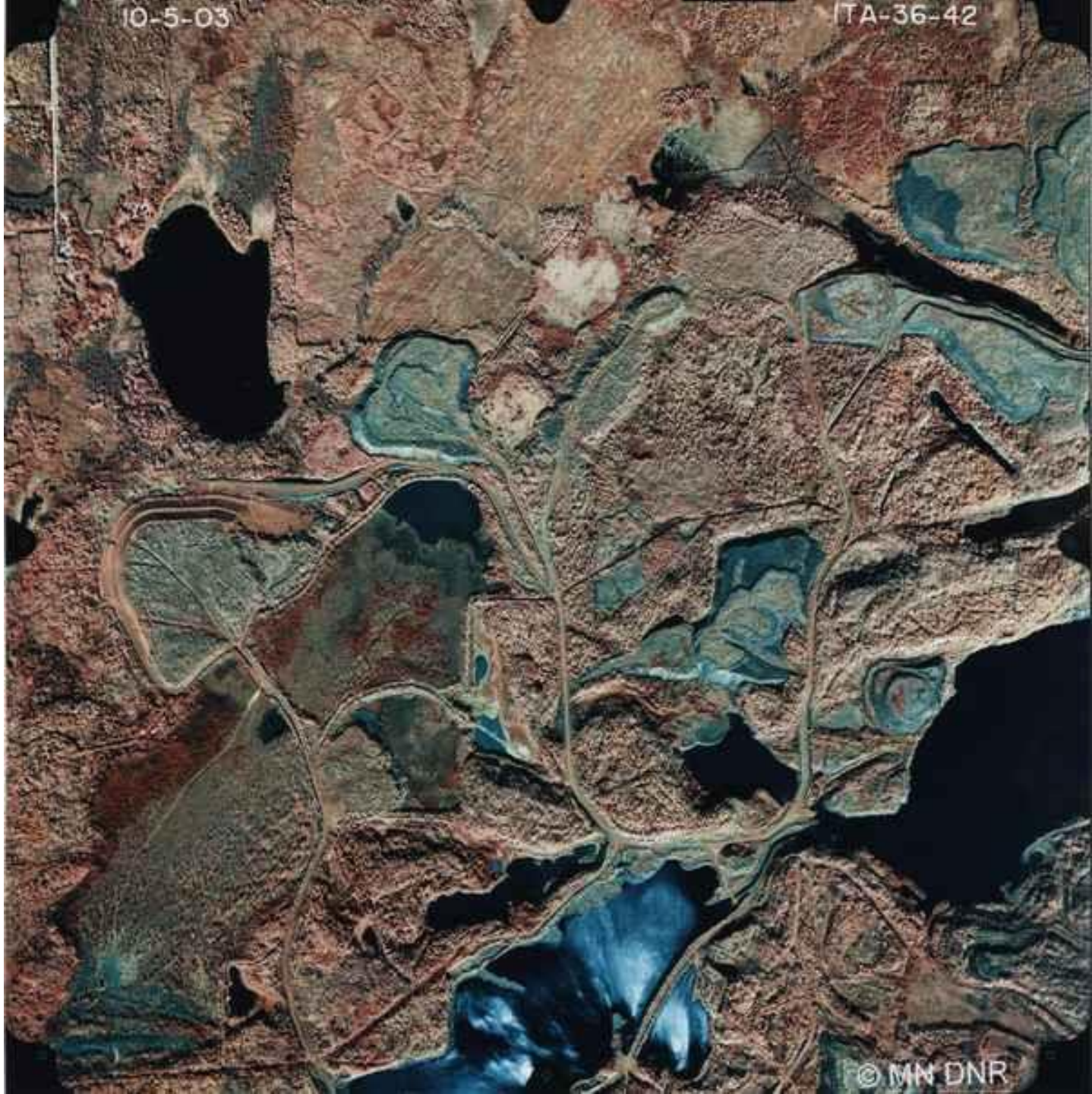


© MN DNR

10-5-03

ITA-36-42

**74 E1**



© MN DNR



9-24-97

SLS-15-7

**75 C7**



© MN DNR

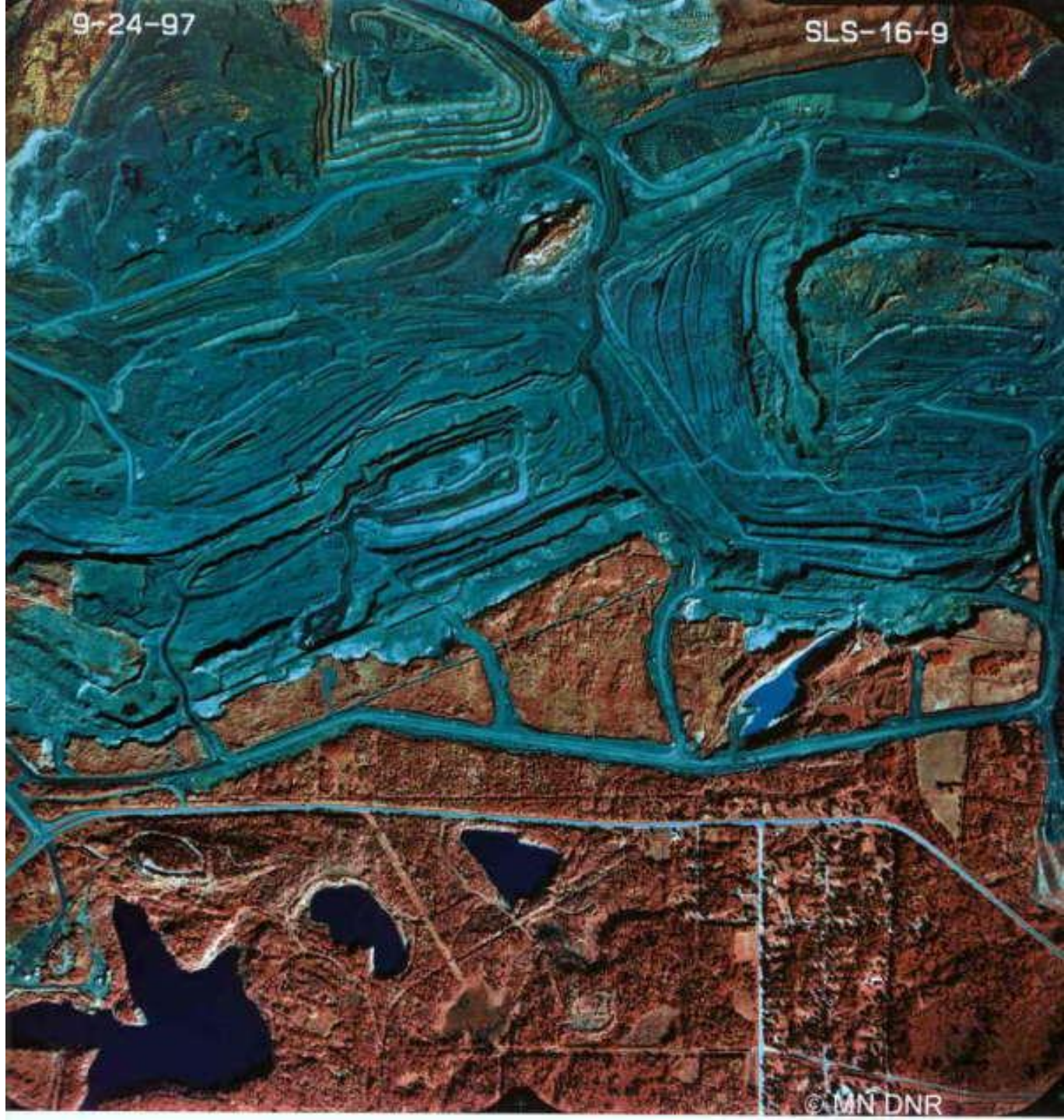
**74**



9-24-97

SLS-16-9

**75**



© MN DNR

9-24-97

SLS-15-8

**75**  
**IRON**  
**MOUNTAIN**



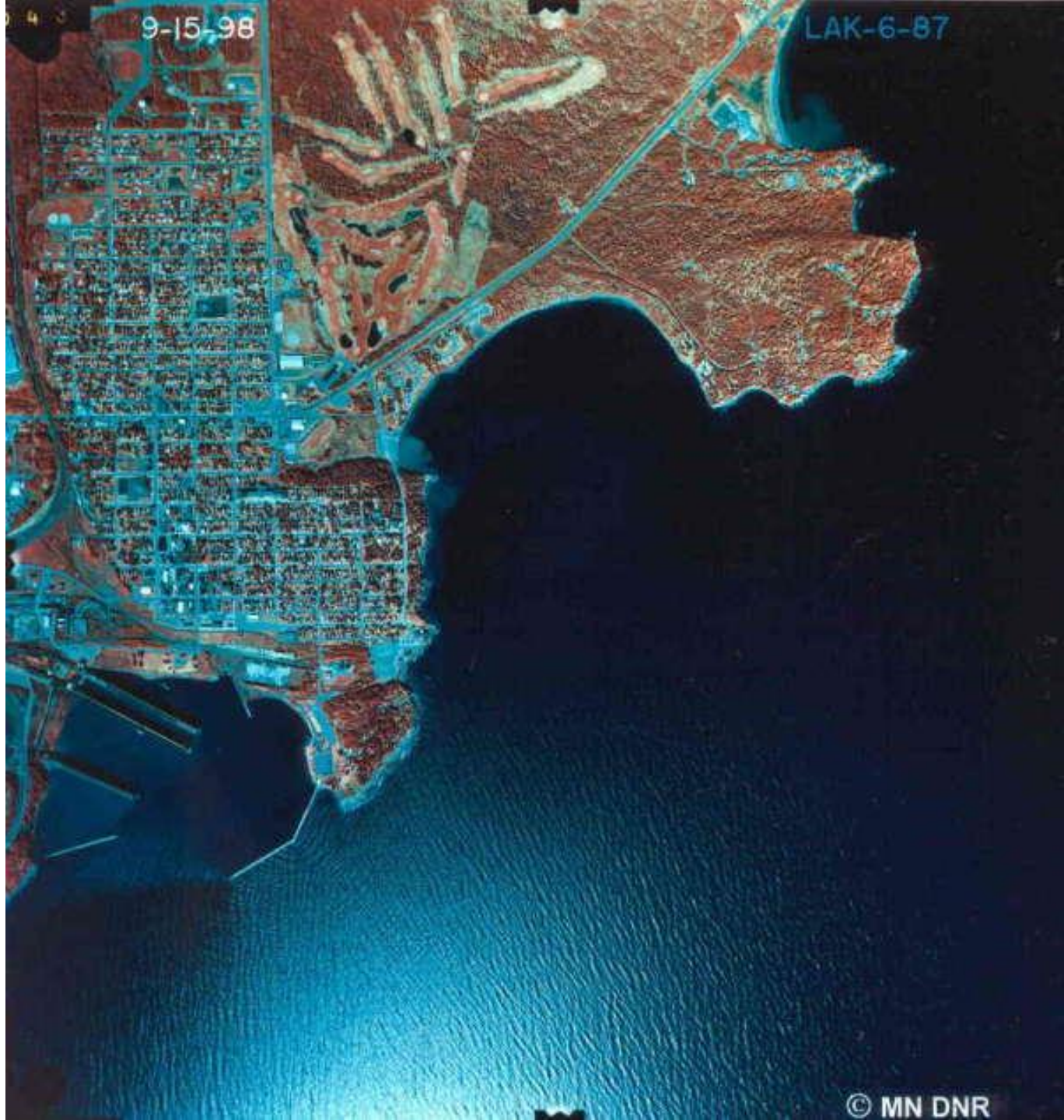
© MN DNR



9-15-98

LAK-6-87

**67 6B**



**66 5C**



9-15-98

LAK-2-99

9-16-98

LAK-16-64

**77 E9**



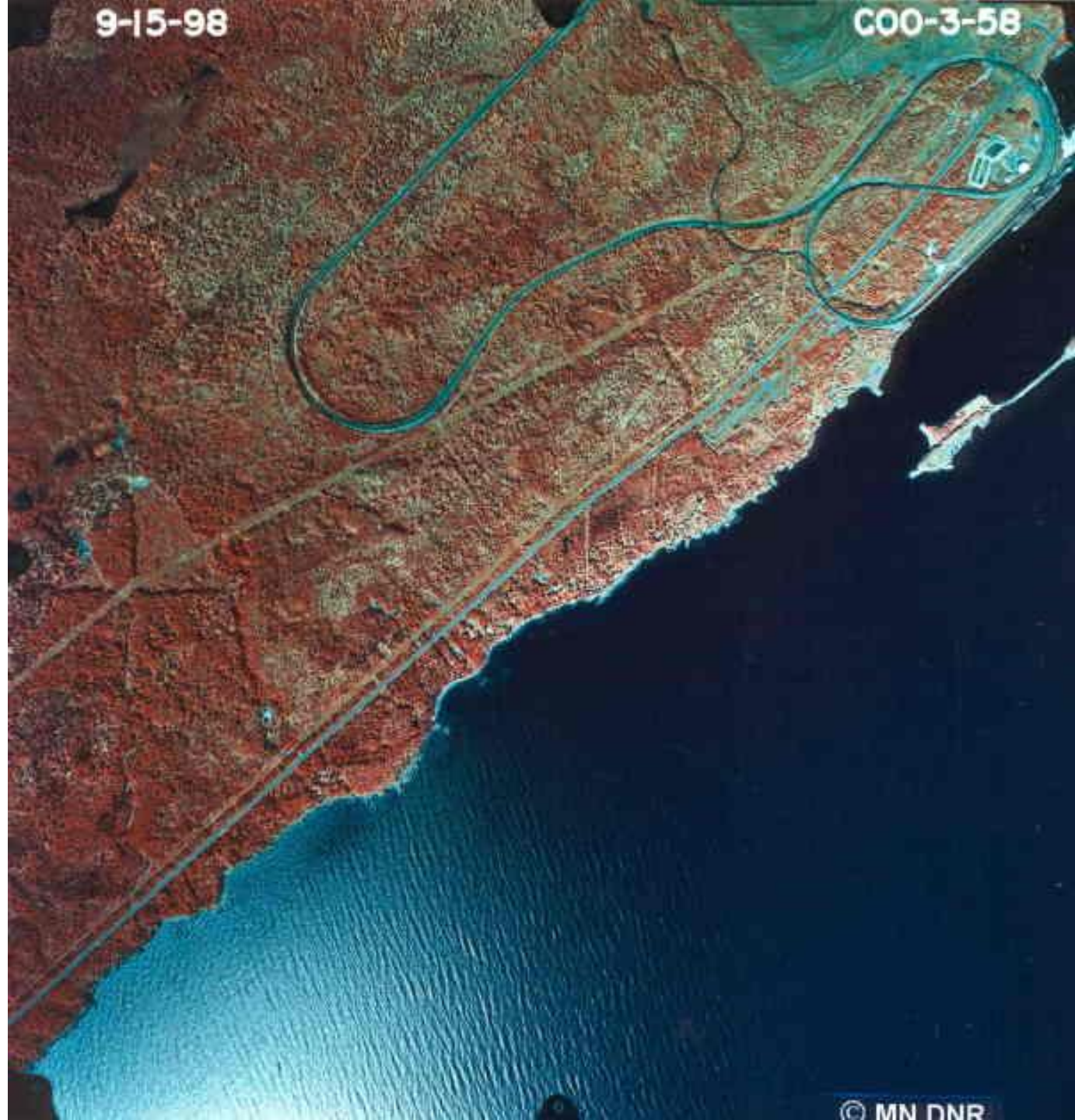
© MN DNR



9-15-98

C00-3-58

**67 D8**





Duluth  
35  
53  
2

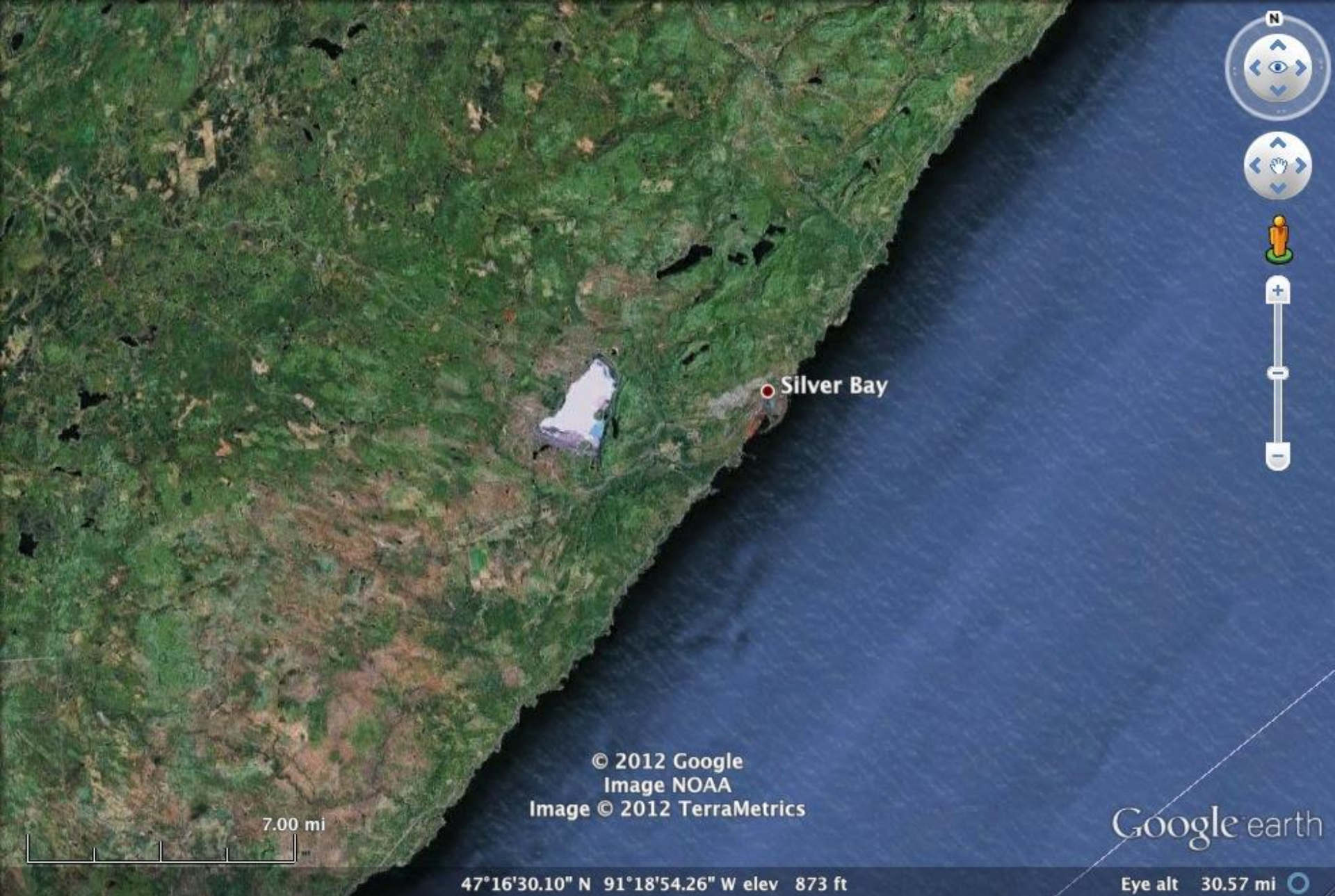
28.0 mi

© 2012 Google  
Image NOAA  
Image © 2012 TerraMetrics  
© 2012 Cnes/Spot Image

47°07'53.43" N 90°53'28.15" W elev 306 ft

Google earth

Eye alt 119.68 mi



Silver Bay

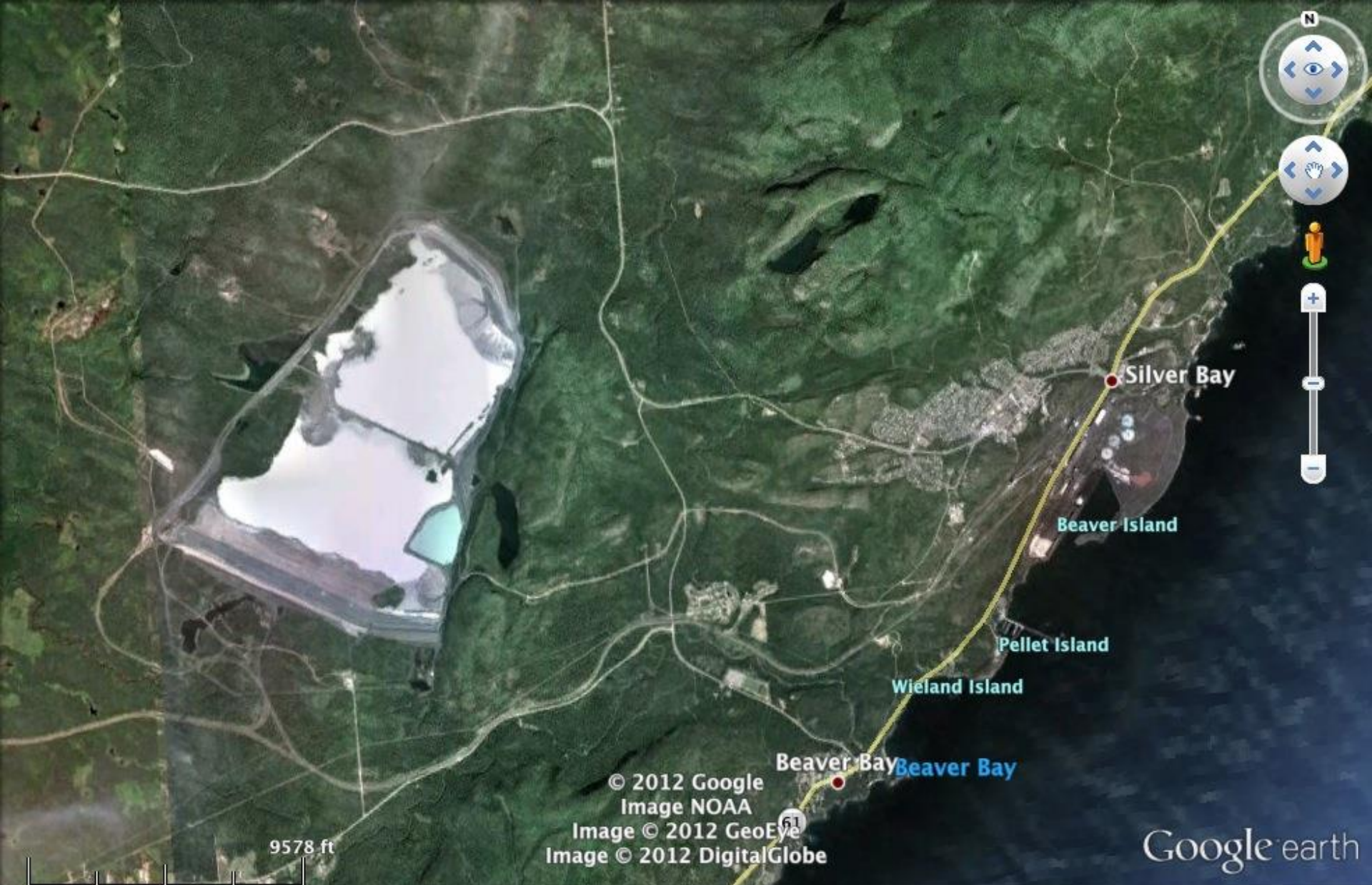
7.00 mi

© 2012 Google  
Image NOAA  
Image © 2012 TerraMetrics

Google earth

47°16'30.10" N 91°18'54.26" W elev 873 ft

Eye alt 30.57 mi



9578 ft

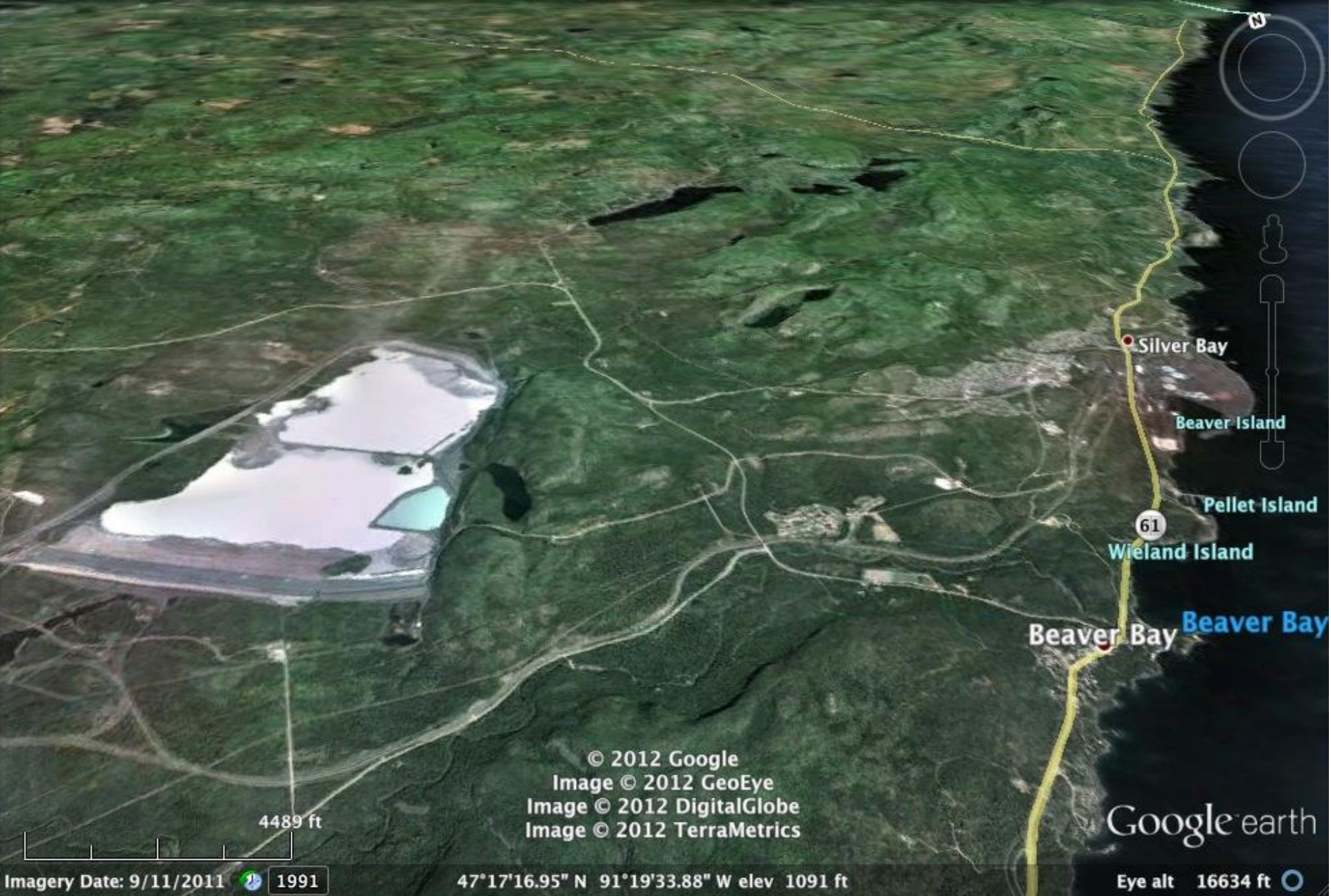
© 2012 Google  
Image NOAA  
Image © 2012 GeoEye  
Image © 2012 DigitalGlobe

Google earth

Imagery Date: 9/11/2011 1991

47°17'22.73" N 91°19'06.21" W elev 1034 ft

Eye alt 42661 ft



© 2012 Google  
Image © 2012 GeoEye  
Image © 2012 DigitalGlobe  
Image © 2012 TerraMetrics

4489 ft

Imagery Date: 9/11/2011 1991

47°17'16.95" N 91°19'33.88" W elev 1091 ft

Google earth

Eye alt 16634 ft









**78 B4**

